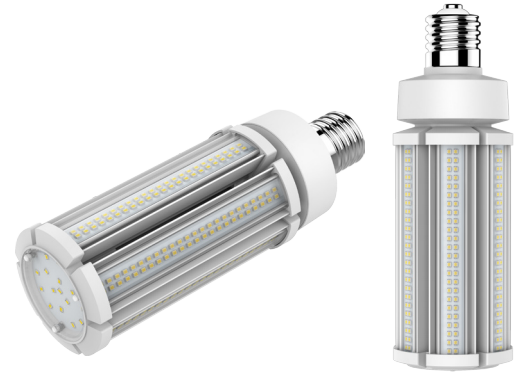


UNIVERSAL LIGHT™ G5 S **HID Replacement**

DESCRIPTION

The Universal Light™ G5 S has a highest lumen per watt in the industry. The Universal Light™ G5 S delivers maximum efficiency with energy savings over 80%. The G5 S lamp operates on line voltage, eliminating ballast replacement and lamp degradation. The TGS Universal Light™ G5 S is a direct replacement for metal halide, high pressure sodium, and fluorescent lamps in fixtures with a mogul and medium base. It is an ideal replacement for acorn, tear drop, globe, bollards, post top, street light and area lighting and much more.



APPLICATIONS

Commercial, Industrial, Street Lights, Post Tops

FEATURES

Construction

Aluminum alloy and a PC base housing.
Passive cooling system.

Electrical

Input Voltage: 100-277VAC
Optional external high power surge protector.

Optical System

360° beam pattern.

Installation/ Mounting

Mogul Base (E39) Socket (Ballast must be bypassed)
Medium Base (E26) Socket (Ballast must be bypassed)

Warranty

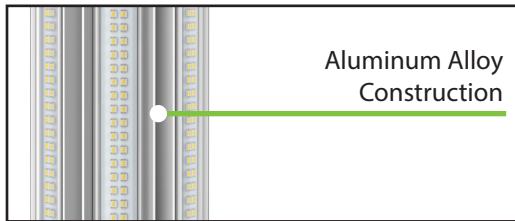
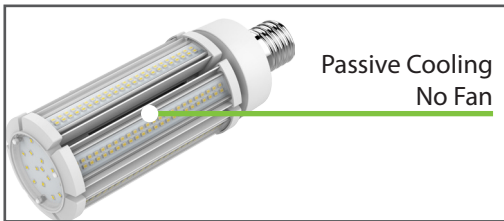
6 Year Warranty.
Optional 7/10 Year Warranty Available
See warranty documentation for more information.



UNIVERSAL LIGHT™ G5 S

36W (5,760 lm)
45W (7,200 lm)
54W (8,640 lm)
63W (10,080 lm)

Projected L70: 75,000+ hours
Warranty: 6 Years
Efficacy: 160 LpW



Ordering Information

EXAMPLE: 318036-26-G5-S-E39

Universal Light™	Wattage	CCT	Series Type	High Power	Base Type
3180	36 - 36W 45 - 45W 54 - 54W 63 - 63W	50 - 5000K 40 - 4000K 30 - 3000K	G5	S	E26 - Medium Base E39 - Mogul Base

Specifications and Dimensions subject to change without notice.

*MOQ and longer lead times may apply, please contact customer service for more information.

Performance Information

Input Voltage	100-277VAC
Input Frequency	50/60Hz
Wattage	See Performance Table
Delivered Lumens	See Performance Table
Efficacy	See Performance Table
CRI	>80
Available CCT	3000K, 4000K, 5000K
Projected L70	57,000+ hours
Power Factor	>0.9
THD	<20%
Dimming	None
Operating Temp.	-40°F~140°F
IP Rating	IP64

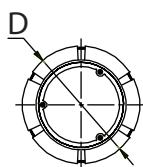
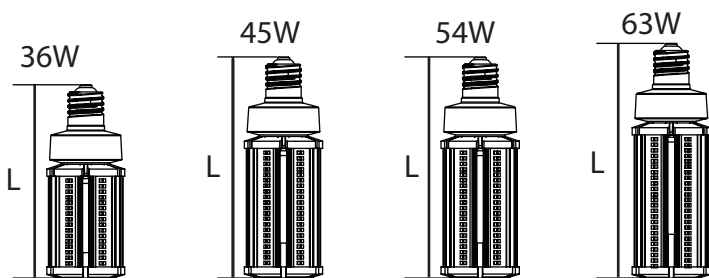
Replacement Chart

Wattage	Replacement (MH,HPS)
36W	175W
45W	200W
54W	250W
63W	320W

Performance Table

SKU	Wattage (W)	5000K	
		Delivered Lumens (lm)	Efficacy (lm/W)
318036-50-G5-S-E39	36	5760	160
318045-50-G5-S-E39	45	7200	160
318054-50-G5-S-E39	54	8640	160
318063-50-G5-S-E39	63	10080	160

Product Dimensions



36W 45W 54W 63W

SKU	D	E26	E39	Weight (lbs)
		L	L	
318036-XX-G5-S-XXX	ø3.35"	7.95"	8.62"	1.41
318045-XX-G5-S-XXX	ø3.35"	9.13"	9.80"	1.61
318054-XX-G5-S-XXX	ø3.35"	9.13"	9.80"	1.65
318063-XX-G5-S-XXX	ø3.35"	9.72"	10.39"	1.81