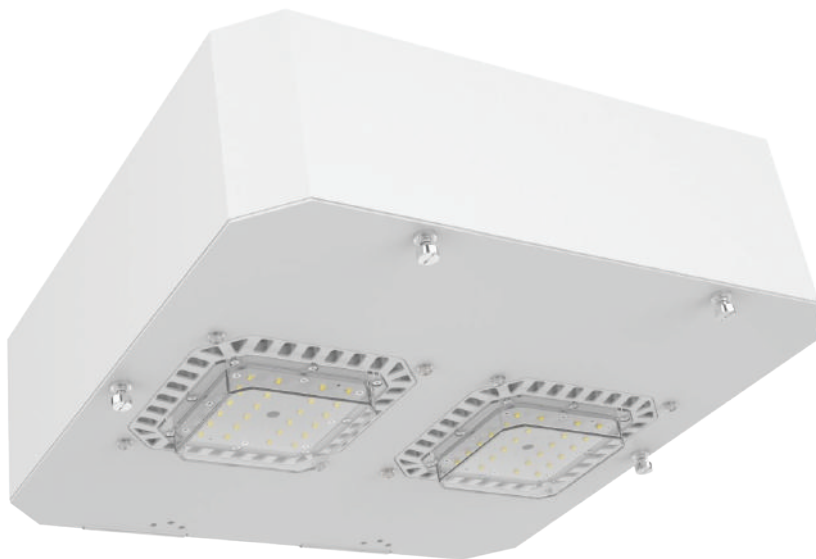


Changing the World, One Bulb at a Time.



FLEXOPTIX™ CANOPY FIXTURES



Features & Benefits:

- High Performance LED Light Engine With CREE XT-E Flexible Modular Design
- Direct Replacement Of Gas Station Surface Mount MH Lights
- Multiple Optical Lens Options
- Vortex Air Flow Thermal Technology
- UL & cUL Certified & DLC Qualified
- IP65/IP67 Listed
- Designed For Commercial / Industrial Use
- Suitable For Indoors & Outdoors
- Variety of Mounting Options
- Dimmable & Motion Sensor Compatible

Applications:

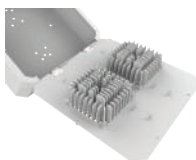
- Gas Stations
- Airports & Hangers
- Auto Dealerships
- Industrial & Warehouse Buildings



50W LED Light Engine (120°)



50W LED Light Engine (85/135°)



Hinged Housing Design



Retrofit Kit



Complete Parts & Pieces



Due to advancements in technology, specifications are subject to change without notice.

All images are copyright Truly Green Solutions, Inc. and may be only be used with permission.

WARNING: READ INSTRUCTIONS BEFORE INSTALLING

Disconnect all power sources to the fixtures before installing.

www.trulygreensolutions.com | info@trulygreensolutions.com P: 818.206.4404 | F: 866.577.5302

Changing the World, One Bulb at a Time.



FLEXOPTIX™ CANOPY FIXTURES



Product Model	3410	3415
Comparable To HID	250W	400W
Technical Parameters	100W	150W
LED Light Engine	50Wx2	50Wx3
Input Voltage	AC 100~277V	AC 100~277V
Power Frequency	47~63Hz	47~63Hz
Total Power Consumption	100W±5W	150W±5W
LED Power Consumption	91W±5W	136W±5W
LED Chip	Cree XT-E, 48pcs	Cree XT-E, 72pcs
Power Factor	≥0.95	≥0.95
Total Harmonic Distortion	≤15%	≤15%
Luminaire Efficiency(IES)	100 lm/W	99 lm/W
Luminous Flux(IES)	9734 lm	14,292 lm
CRI	≥70	≥70
Colour Temperature	4500~5500K (2500~5500K Optional)	4500~5500K (2500~5500K Optional)
Beam Angle	120°(85/135° Optional)	120°(85/135° Optional)
IP Rating	IP65(IP67 Optional)	IP65(IP67 Optional)
Operating Temperature	-30 to 55°C(-22 to 131°F)	-30 to 55°C(-22 to 131°F)
Humidity	15% to 90%RH	15% to 90%RH
Lumen Maintenance	L70>150,000Hrs	L70>150,000Hrs
Light Fixture Material	Aluminum Alloy	Aluminum Alloy
Dimensions(LxWxH)	400x400x120mm	460x460x120mm
Dimmable	Yes/No	Yes/No



Illumination 120 Degree
Beaming Angle

HT	Diameter	LUX
6m	Ø 21m	103LUX
7m	Ø 24m	78LUX
8m	Ø 28m	60LUX
9m	Ø 31m	48LUX
10m	Ø 35m	39LUX

Illumination 120 Degree
Beaming Angle

HT	Diameter	LUX
6m	Ø 21m	103LUX
7m	Ø 24m	78LUX
8m	Ø 28m	60LUX
9m	Ø 31m	48LUX
10m	Ø 35m	39LUX

Due to advancements in technology, specifications are subject to change without notice.
All images are copyright Truly Green Solutions, Inc. and may be only be used with permission.
WARNING: READ INSTRUCTIONS BEFORE INSTALLING.
Disconnect all power sources to the fixtures before installing.

www.trulygreensolutions.com | info@trulygreensolutions.com P: 818.206.4404 | F: 866.577.5302

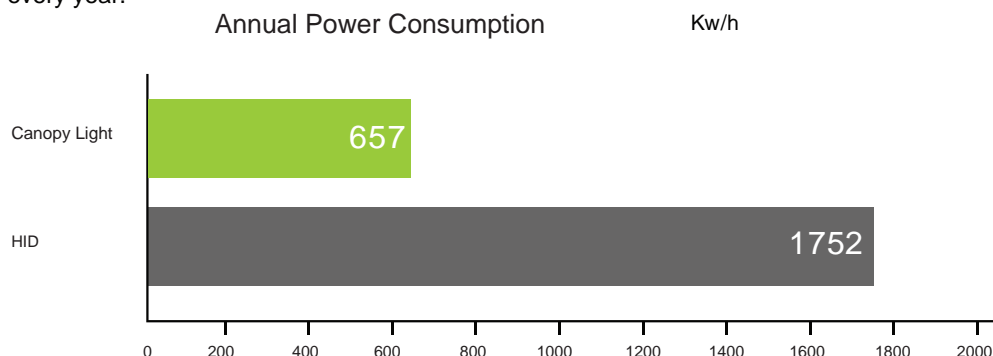


Cost Effective

The best choice in reducing the effects of surging power costs across over world.
Saves up to 63% of power compared to Traditional Metal Halide light.

Power Consumption	Luminous Flux	Suspension Height	Comparable Traditional Metal Halide Light	Energy Saving
100W	9,734 lm	6 to 10m	250W HID	60%
150W	14,292 lm	6 to 10m	400W HID	63%

Annual power consumption calculation is based on 12 lighting hours per day, 365 days per year. As a direct replacement of 400W Traditional Metal Halide Light, a 150W FlexOptix™ Canopy Fixture saves 1095 Kw/h every year.



Environmental Benefits

Carbon Emissions

Reduces carbon footprint by up to 63%, compared to Traditional Metal Halide light.

Industry Applications

No glass to shatter. Easily cleaned.
IP67 option available for harsh operating environments.

Health & Safety

Instant on. No delayed start-up after power outage.
Uniform light colour and intensity across the work space.
No mercury or other hazardous components.
Recyclable.



FLEXOPTIX™ CANOPY FIXTURES

ORDERING INFORMATION

A

Complete Light Fixture

1. Fully assembled light fixture, quality tested before shipping.
2. Easy installation with included instructions.
3. 5 mounting options.



B

Complete Light Fixture in Parts & Pieces

1. Securely packaged parts and pieces for complete fixture assembly.
2. Meet Made-in-America requirements by assembling locally.
3. Substantial savings in customs duties and transportation costs.



C

Retrofit Kits

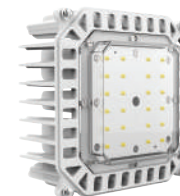
1. The IP65/IP67 light engine comes with MeanWell driver.
2. Complete kit includes light engines, power supply, mounting plate, and wiring harness.
3. Ready retrofit kits of 100-150W to replace 250-400W HID lamps.



D

LED Light Engine Core

1. The IP65/IP67 light engine does not include driver.
2. An easy-for-use spare for quick repair or replacement
3. Two options of light engine beam angle: 120° or 85/135°, at your choice.

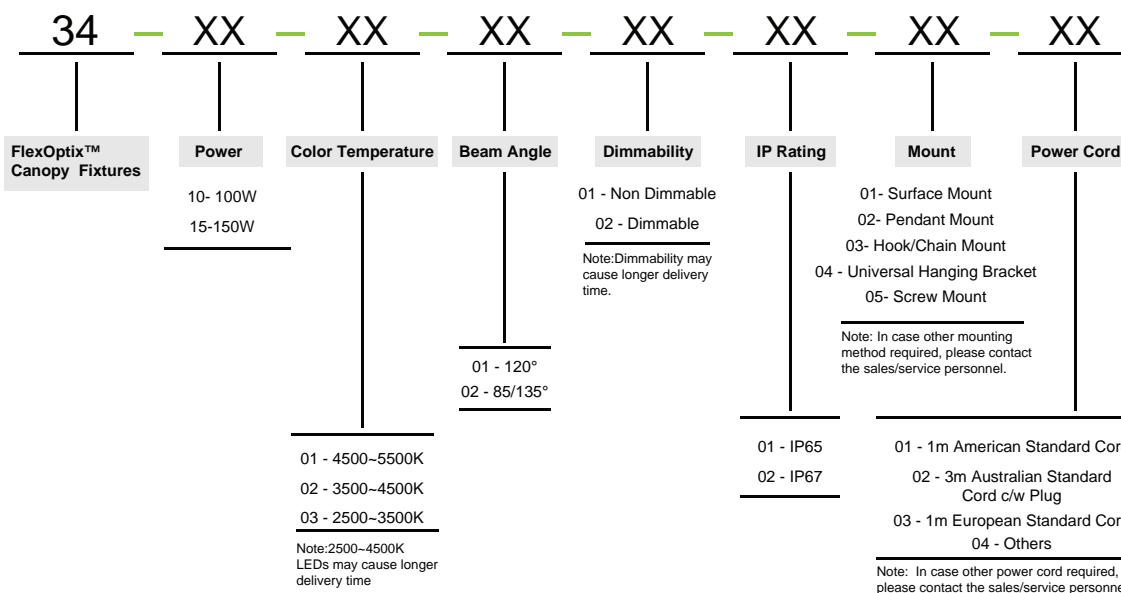


Changing the World, One Bulb at a Time.



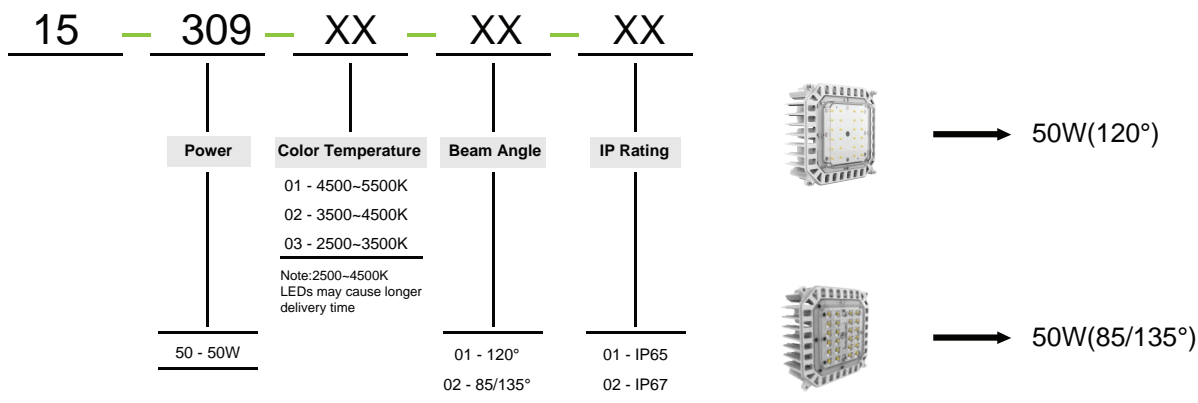
Ordering Information - FlexOptix™ Canopy Fixtures

Ordering Example: 34-10-01-01-01-01-01



Ordering Information - LED Light Engine

Ordering Example: 15-309-01-01-01



Due to advancements in technology, specifications are subject to change without notice.

All images are copyright Truly Green Solutions, Inc. and may be only be used with permission.

WARNING: READ INSTRUCTIONS BEFORE INSTALLING.

Disconnect all power sources to the fixtures before installing.

www.trulygreensolutions.com | info@trulygreensolutions.com P: 818.206.4404 | F: 866.577.5302