



## LED PANEL LIGHT



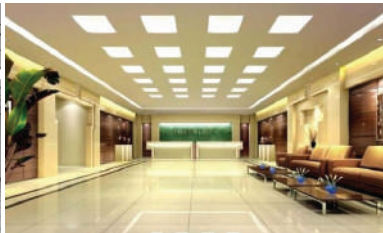
**DESCRIPTION:** LED Panel Light 2'x2' 40W  
**ITEM NUMBER:** 8822XX

### FEATURES

Designed for drop-in ceilings, high performance Edge-Lit LED flat panels are the ideal energy efficient replacement for fluorescent fixtures in offices, schools, hospitality, healthcare and other commercial and industrial applications. Available in 1'x4', 2'x2' and 2'x4' models. Energy savings of 60%+, minimum guaranteed 50,000 hour life, impact and vibration resistant, no flickering, instant-on technology. Edge-lit panels are 0%-100% dimmable. DLC approved.

### APPLICATIONS

|               |                  |
|---------------|------------------|
| Offices       | Bus Stations     |
| Classrooms    | Train Stations   |
| Lobbies       | Medical Facility |
| Back of house | Malls            |
| Restaurants   | Hotel            |



### REPLACES



20-72 W T8 or T12 Fluorescent



2x2 Troffer T-8 Fluorescent

### TECHNICAL PARAMETERS

**Life Span:** 50,000  
**Fixture Material:** Aluminum & PC Cover  
**IP Rating:** N/A  
**Dimensions:** 602x602x13mm  
 (23.70x23.70x0.51in)  
**Weight:** 4.4Kg (9.7 lbs)  
**Dimmable:** Yes  
**Thermal Layer Material:** Aluminum & PC Cover

### OPTICAL PARAMETERS

**LED Chip Type:** SMD  
**LED Chip Quantity:** SMD  
**Lumens:** 3700 lm  
**Color Temperature:** 5000K (01)  
 4000K (02)  
 3000K (03)  
**CRI:** > 80  
**Beam Angle:** 120°  
**Socket:** Full Fixture  
**Cover:** Frosted

### ELECTRICAL PARAMETERS

**Input Voltage:** AC 120V-277V  
**Total Power Consumption:** 40W  
**Power Factor:** > .90

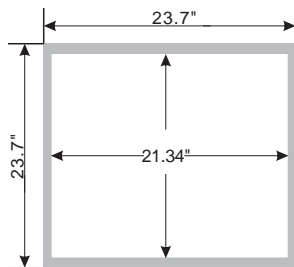


Due to advancements in technology, specifications are subject to change without notice.

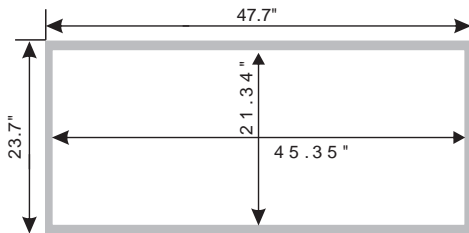
All images are copyright Truly Green Solutions, Inc. and may be only be used with permission.

WARNING: READ INSTRUCTIONS BEFORE INSTALLING

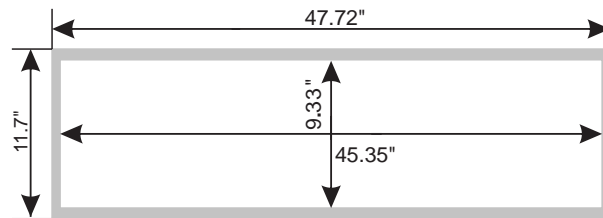
Disconnect all power sources to the fixtures before installing.



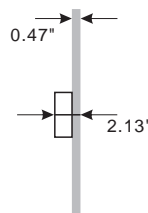
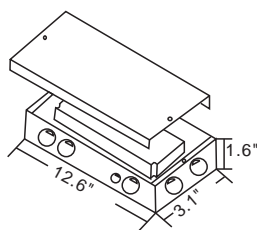
**2x2**



**2x4**



**1x4**



## Ordering Information - LED Panel Light 40W 1'x4'

**881301** LED Panel Light - 1 x 4 - 40W - 5000K - Day White-DLC-Dimmable

**881302** LED Panel Light - 1 x 4 - 40W - 4000K - Natural White-DLC-Dimmable

**881303** LED Panel Light - 1 x 4 - 40W - 3000K - Warm White-DLC-Dimmable

## Ordering Information - LED Panel Light 40W 2'x2'

**882201** LED Panel Light - 2 x 2 - 40W - 5000K - Day White-DLC-Dimmable

**882202** LED Panel Light - 2 x 2 - 40W - 4000K - Natural White-DLC-Dimmable

**882203** LED Panel Light - 2 x 2 - 40W - 3000K - Warm White-DLC-Dimmable

## Ordering Information - LED Panel Light 50W 2'x4'

**884401** LED Flat Panel 2 x 4 - 50W - 5000K - Day White- DLC-Dimmable

**884402** LED Flat Panel 2 x 4 - 50W - 4000K - Natural White-DLC-Dimmable

**884403** LED Flat Panel 2 x 4 - 50W - 3000K - Warm White-DLC-Dimmable

Due to advancements in technology, specifications are subject to change without notice.

All images are copyright Truly Green Solutions, Inc. and may be only be used with permission.

WARNING: READ INSTRUCTIONS BEFORE INSTALLING

Disconnect all power sources to the fixtures before installing.

www.trulygreensolutions.com | info@trulygreensolutions.com P: 818.206.4404 | F: 866.577.5302