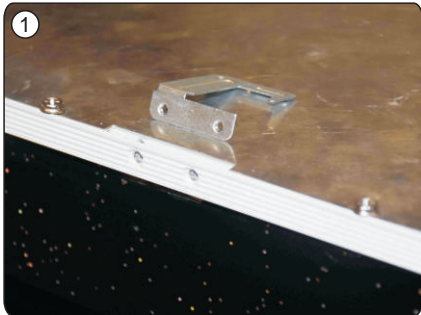
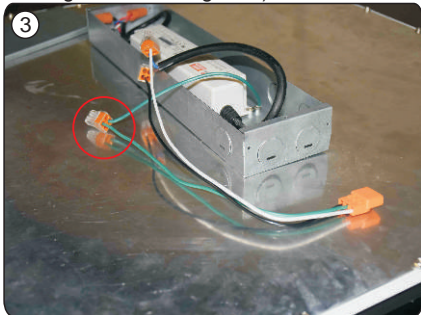


TRULY GREEN SOLUTIONS LED PANEL LIGHT
Surface Mounted Kit
INSTALLATION INSTRUCTIONS

1. Remove the original 4 clips from the panel light by screwdriver.



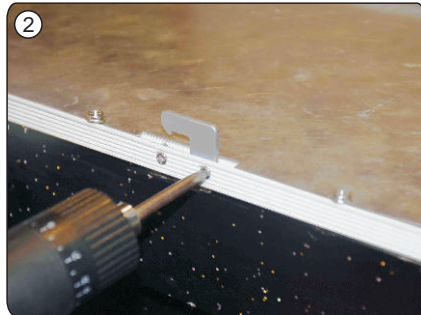
3. Twist off the 2 screws on the driver box and open the cover, connect the terminal of wires (one of provided accessories) to AC line and ground wire of driver (pls note the ground wire is green.)



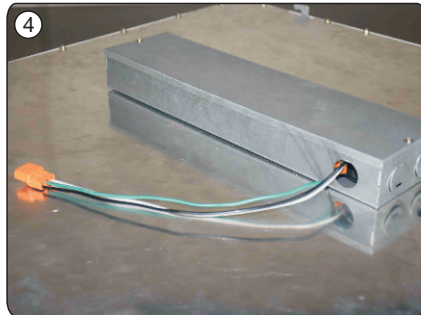
5. Cut off the electricity, insert the L, N and Ground wires of junction box on the ceiling into terminal B. (Note: Ground wire should be in the middle socket of the terminal.)



2. Fixed the 4 clasps on the panel by screws (please note the direction of the 4 clasps installation must be consistent.)



4. Pry open the outlet hole on the side of driver box, thread the terminal of wires through this hole, then cover the driver box and fix it by original screws.



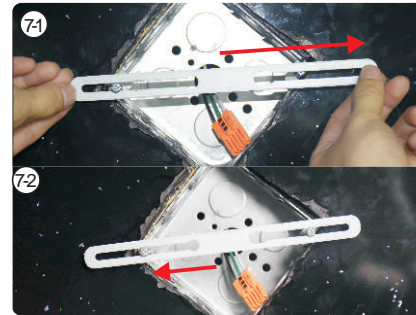
6. Twist two 5/32" screws on the junction box on the ceiling by screwdriver, adjust the nut from ceiling distance around 1/4".



TRULY GREEN SOLUTIONS LED PANEL LIGHT
Surface Mounted Kit
INSTALLATION INSTRUCTIONS



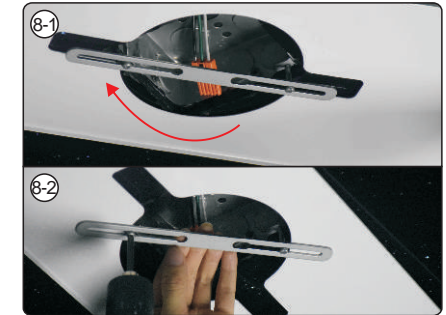
7. Insert on of the screws on the junction box into the connect plate, then adjust the plate and insert the another screw, make sure the plate in the middle position.



9. A fix the surfaced mounted kit by 4 screws as pictured.



8. Mount the kit when the kit groove and connect plate are aligned, rotate the kit to your preferred position, then tighten the two screws on the junction box.



10. Pull down the terminal B of junction box on the ceiling, connect it to terminal A of LED Panel Light.



11. Align the panel light to surface mounted kit, put the 4 clasps of panel light into the groove of the kit, make sure the 4 clasps clamping the kit, check it if it is a fixed the switch the power on.

