

TRULY GREEN SOLUTIONS LED ECO PANEL LIGHT INSTALLATION INSTRUCTIONS

NOTE

Please read this entire manual to fully understand and safely use this product. Specifications are subject to change without notice. Please visit our website for the most recent user guide versions.

UNPACKING

1. Unpack and carefully examine the product.
2. Report any damage and save all packing materials if any part(s) were damaged during shipping.
3. Do not attempt to use this apparatus if it is damaged.

IMPORTANT SAFETY INFORMATION



1. Suitable for Damp location. Access above ceiling required. Do not install insulation within 51 mm (2 in) of any part of the luminaire. Suitable for suspended ceilings.
2. Maximum ambient temperature is 40°C

READ ALL INSTRUCTIONS BEFORE INSTALLATION

1. Consult a qualified electrician to ensure correct branch circuit conductor.
2. The product should be installed and operated by a qualified electrician or technician in accordance with relevant local codes.
3. Risk of electric shock. Ensure that main power source is off when wiring or soldering the sections of the product.
4. Before installing this fixture or doing any maintenance, make sure to turn off the power supply at the circuit breaker or fuse box.
5. Check to make sure that all fixture connections have been properly made and the fixture is grounded to avoid potential electrical shocks.
6. Do not handle energized fixture when hands are wet, when standing on wet or damp surfaces, or in water.
7. This panel light is normally set to work at extra low voltage below DC42V and constant current conditions to ensure safety to human body.
8. Designed for use in 100V~277V, or 347V-480V, 50-60Hz protected circuit. Apply class 2 power supply.

INCLUDED IN THIS BOX

1. LED Panel Light
2. Installation instruction



TRULY GREEN SOLUTIONS LED ECO PANEL LIGHT INSTALLATION INSTRUCTIONS

INSTALLATION INSTRUCTIONS

Step1: Open J-Box

Step2: Bend hand buckle by 90°, making it vertical to the rear cover of panel light (Figure 2A). Bend hang buckle's top part by 90° (Figure 2B), Same to 4 hang buckles.

Step3: Turn off power, and remove the ceiling panel.

Step4: Place the troffer into the T-bar. Ensure the troffer are attached to the ceiling. (Figure 3)

Step5: Remove appropriate round knock-out(s) and connection conduit to wiring box with proper connector(s)

Step6: AC input connect to neutral in L, the line connect to N, the ground connect to the green wire. (Figure 4)

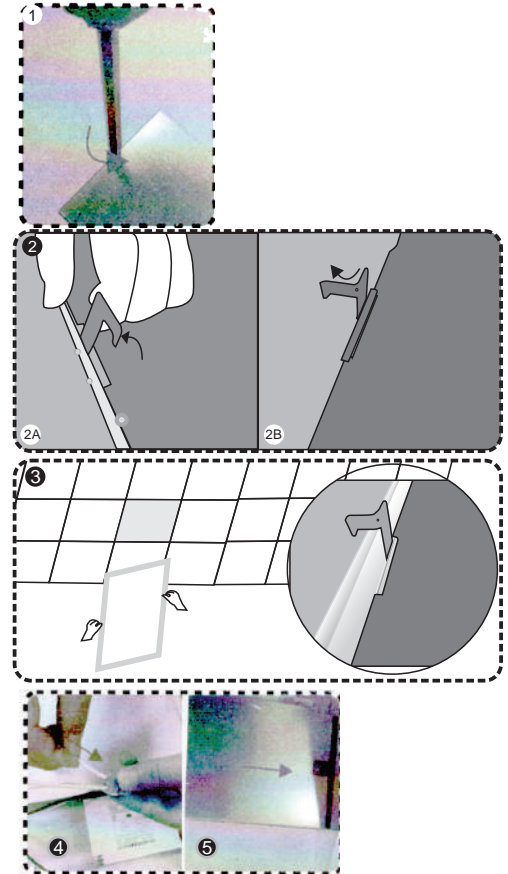
Dimmer Connect:

Compatible with 0-10V, dimmer

The PUR (D+) to the dimmer (D+) and the GRY(D-) to the dimmer-;

Connect wires as shown in wiring diagram (Figure 4)

Step7: Push all wires back into the junction box, Close J-Box for cap.



WIRING DIAGRAM

