



CE FC

PS  
E

ETL  
Intertek

IP65

10  
YEAR  
WARRANTY

# LED LINEAR HIGH BAY

[www.trulygreensolutions.com](http://www.trulygreensolutions.com)

**tgs**  
TRULY GREEN SOLUTIONS

**Features**



5 MODELS  
AVAILABLE IN  
90W TO 240W



EXPECTED LIFE  
OVER 100,000 HRS



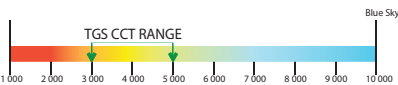
IES FILES @  
[www.trulygreensolutions.com](http://www.trulygreensolutions.com)



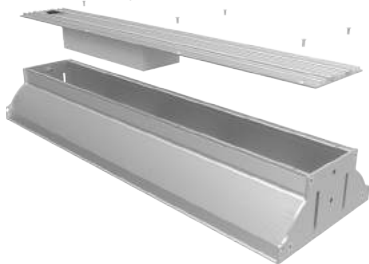
SUITABLE FOR  
DAMP LOCATIONS



GLARE FREE  
PC LENS COVER



SELECTION OF  
COLOR RANGES

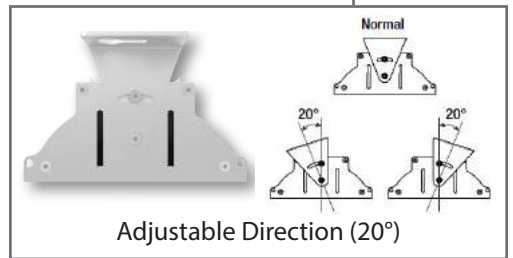


EASY ACCESS  
DRIVER HOUSING

Powered by **MW**  
MEAN WELL



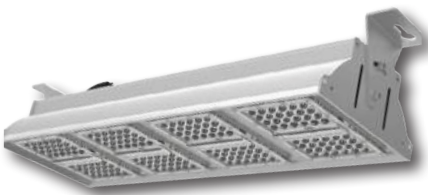
GENUINE  
NICHIA  
LED



Replaceable optic lens with 40°x80° & 55°x130° beam angles. Ideal solution for high rack warehouses



**Mounting Options**



Surface Mount

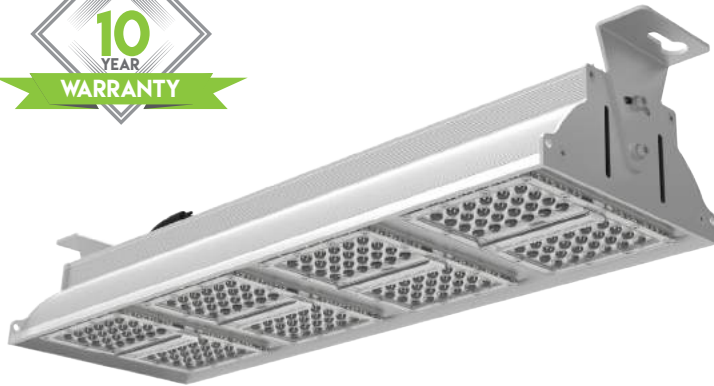


Suspended Mount



Pendant Mount





Replaces 400W  
HID, CFL, MH, HPS, Fluorescent

**Highlights**

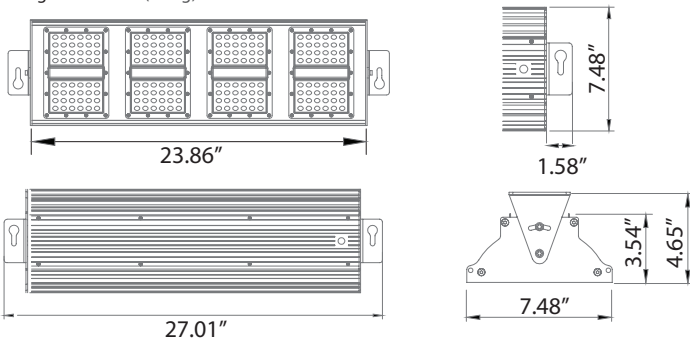
The TGS LED linear high bay provides exceptional quality, efficiency, and performance. These industrial-grade products are comprised of high efficiency genuine Nichia LED's, producing as much as 140 Lm/W, and are powered by award-winning Mean Well drivers.

Designed with replaceable optic lenses of 40°x80° and 55°x130° beam angles, TGS LED linear high bays are ideal for use in warehouses and any expansive facilities. The integrated single piece aluminum heat sink provides highly efficient thermal management and long-lasting performance.

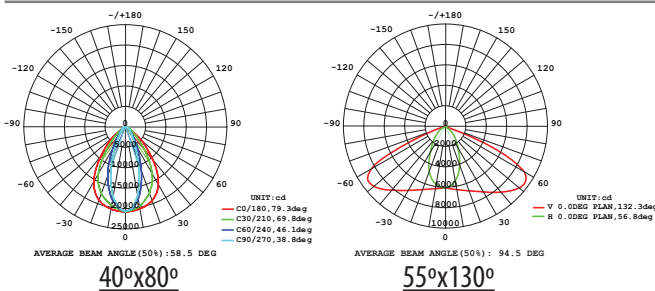
Eleven wattages and three mounting options are available to fit any application. Dimming capability is also offered as an option. The products are ETL, cETL, CE, FCC approved, Title 24 compliant, and IP65 Rated.

**Product Dimensions**

Length: 27.01 in (686mm)    Width: 7.48 in (190mm)    Height: 4.65 in (118mm)  
Weight: 10.36 lbs (4.7kg)



**Photometrics**



**Optical Details**

System Efficacy	140 LpW
Lumen Output	16,800 lm
CCT	3000K, 4000K, 5000K
Beam Angle	40°x80°, 55°x130°
CRI	≥70
System Efficiency	≥90%

**Electrical Details**

Input Voltage	100-277V AC (347-480V Available)
Power Frequency	47-63Hz
Output Voltage	DC 40-48V
Input Current	2.3A (constant current)
Power Efficiency	>92%
Power Factor	≥0.95
Total Harmonic Distortion	≤15%
Dimmable	Yes (Optional)

**Other Details**

System Power Usage	120W
LED Power Usage	110W
Fixture Material	Aircraft Grade Aluminum
Finish	Gray, Graphite, Black, White, and Bronze
Ingress Protection	IP65
Luminaire Net Weight	10.36 lbs (4.7kg)
Lifespan	100,000+ Hours
Storage Temperature	-40°~149°F
Operating Temperature	-40°~140°F
Operating Humidity	15%~90% RH
Product Dimension	27.01x7.48x4.65 in
Replaces (HID, CFL, MH, HPS, Fluor)	400W

**Application**

• Manufacturing Facilities	• Retail Spaces
• Warehouses Facilities	• Aircraft Hangers
• Cold Storage Facilities	• Aircraft Hangers
• Distribution Facilities	• High Racks

**Mounting Options**

• Surface Mount
• Suspended Mount
• Pendant Mount



## Accessories

# WattStopper®



### Key Features

- Compact line voltage sensor with integral lens for all high bay applications
- 360° coverage from 15'-40'; rotatable snap-on aisleway masking
- Adjustable time delay and hold-off daylighting level
- HBP-111 adjustable via handheld wireless configuration tool
- 120, 277, 347V, 60Hz or 230V, single phase, 50Hz operation
- Lens covers 100' diameter area at a height of 40'

### General Info

Type: High Bay PIR Occupancy Sensor

Typical Applications:

- Warehouses
- Gymnasiums
- Distribution Centers
- High Bay Indoor Spaces

### Technical Info

Operating Temperature Fahrenheit: Temperature 32-158°F

Humidity: 20-90%, non-condensing

Volts: 120/230/277/347 VAC

The HBP Series High Bay Passive Infrared (PIR) Occupancy Sensors provide automatic control of individual LED lighting fixtures in warehouses and other indoor high and low bay spaces. The lens is engineered to provide reliable coverage from a wide range of mounting heights (15' to 40'), and coverage can be masked for aisleway applications using a snap-on accessory (included). A hold-off daylighting feature keeps lighting off when the ambient light level is above the selected threshold. Time delay and light level settings can be adjusted via function-specific trimpots. The HBP-111 can also be adjusted remotely using a wireless configuration tool.

## Ordering Information

**EXAMPLE NUMBER: 175-090-50-01-02-01-01-01**

175	Wattage	CCT	Beam Angle	Dimmability	IP Rating	Mounting Option	Cord	Input Power
LED Linear High Bay	090 - 90W	50 - 5000K	01 - 40°x80°	01 - Non-Dimmable	01 - IP65	01 - Surface Mount	01 - 3ft American Standard Cord	100-277V (Standard)
	120 - 120W	40 - 4000K	02 - 55°x130°	02 - Dimmable		02 - Suspended Mount		01- 347V (Option)
	150 - 150W	30 - 3000K				03 - Pendant Mount		02- 480V (Option)
	180 - 180W							
	210 - 210W							
	240 - 240W							