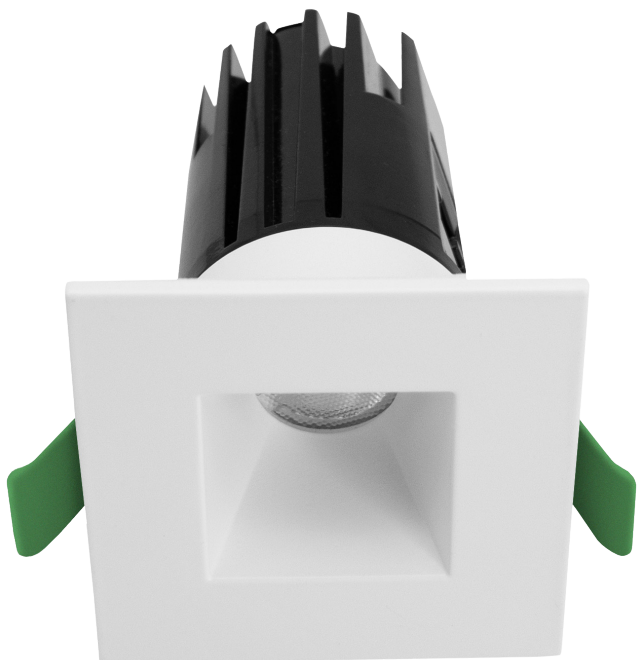


Date:	
Project Name:	
SKU #:	

**ICON S1™**  
Icon Series Square Downlight 1"



STM - Square Trim



STL - Square Trimless

**APPLICATIONS**

Residential, Commercial, Multi-Family

**FEATURES**

**Construction**

- Aluminum Housing

**Finish**

- White Trim  
- Black Trim [Option]

**Electrical & Technical**

- Input Voltage: 120VAC  
120-277VAC [Option]  
- Input Frequency: 60Hz  
- Projected Life: L70 > 50,000 hrs  
- PF: >0.9  
- CRI: >90  
- THD: <20%  
- CCT Selectable: 2700K/3000K/3500K/  
4000K/5000K  
- Operating Temp.: -4°F ~ 104°F  
- Wet Location Rated  
- IC Air-Tight Rated  
- 8W Emergency Battery Backup [Option]

**Optical**

- White PC Lens  
- Available Beam Angles:

- 24° Narrow
- 38° Medium
- 60° Wide

**Installation/Mounting**

- Spring Clip Mount [W/Trim]  
- Flush to Ceiling [Trimless]

**Controls**

- Triac Dimming [120V]  
- 0-10V Dimming [120-277V]

**Compliance**

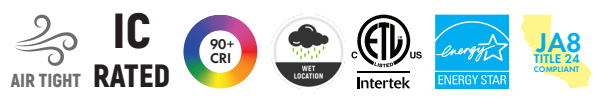
- JA8 TITLE 24 Compliant

**Lumen Output**

• 1"/7W: 500lm

**Warranty**

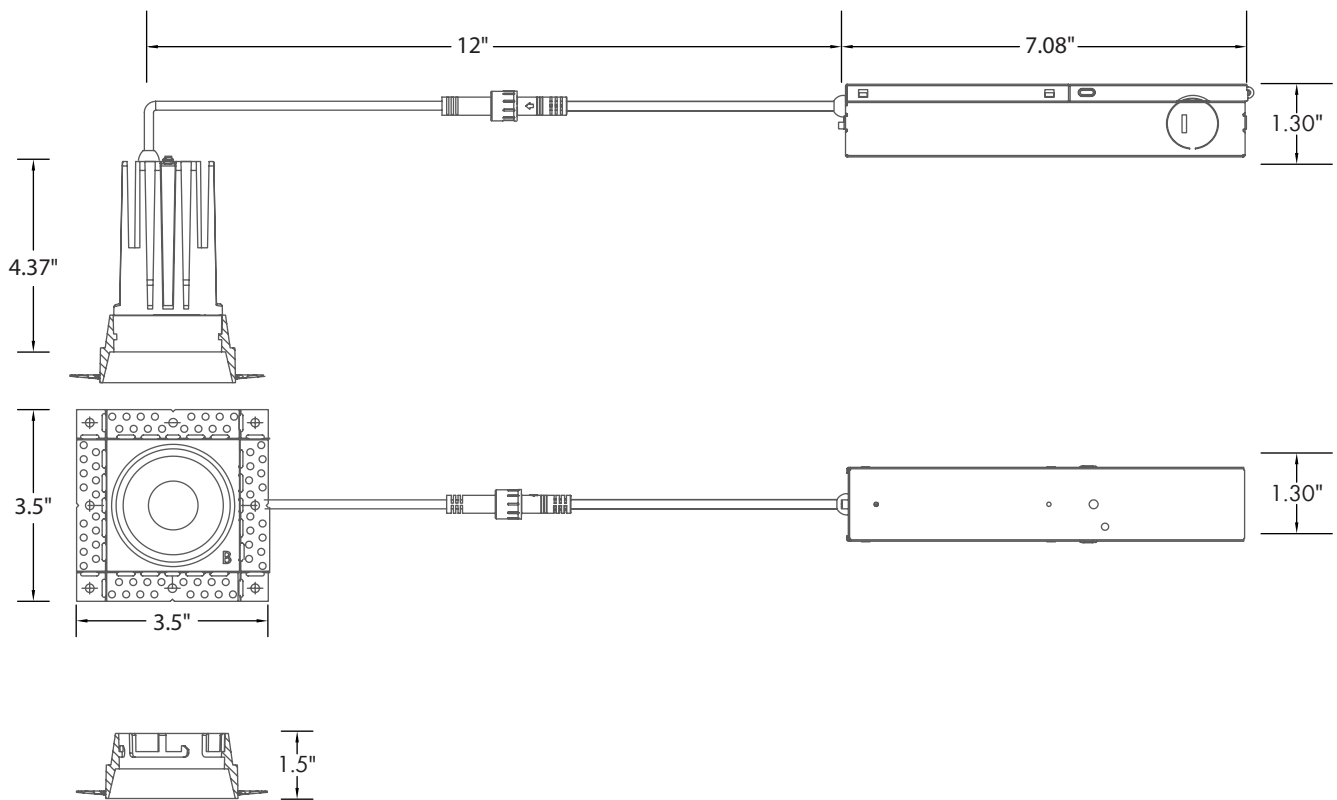
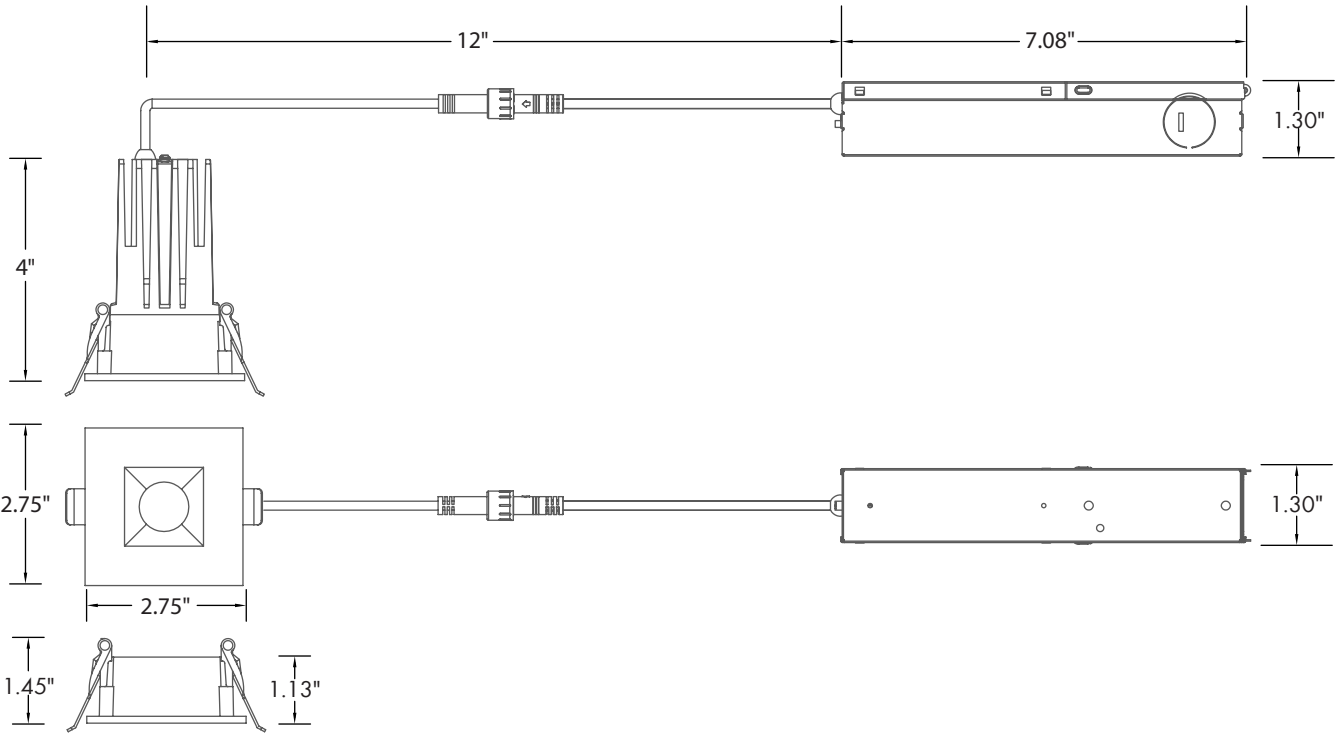
- 5 Year Warranty  
See warranty documentation for more information.



**ORDERING INFORMATION** **EXAMPLE: ICON-S-1-7-5C-38-STM-WH**

Series	Size	Wattage	CCT	Input Voltage	Beam Angle	Trim Type	Trim Finish	Options
ICON-S	1 - 1"	7 - 7W	5C - 2700K/3000K/ 3500K/4000K/ 5000K	[Blank] - 120VAC U - 120-277VAC	24 - 24° 38 - 38° 60 - 60°	STM - Square Trim STL - Square Trimless	BK - Black WH - White	ICON-S-NC [New Construction Plate W/ Hanger Bar] ICON-S-NC-TL [New Construction Plate W/ Hanger Bar] FLEX-6 [6' Flexible Connector] FLEX-10 [10' Flexible Connector] FLEX-20 [20' Flexible Connector] EM [Emergency Battery Backup]

**DIMENSIONS**



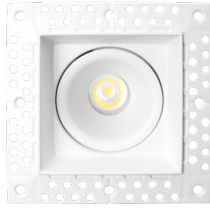
## LUMEN OUTPUT

SKU	Size (in)	Wattage (W)	Delivered Lumens (lm)	Efficacy (lm/W)
ICON-S-1-7-5C-38-STM-WH	1	7	500	71

## ACCESSORIES



Square Trim  
[STM]



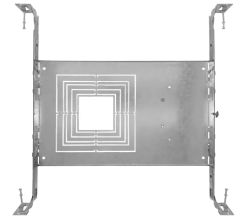
Square Trimless  
[STL]



6'/10'/20'  
Flexible Extension Connector  
[FLEX-6]  
[FLEX-10]  
[FLEX-20]



New Construction Kit  
W/ Hanger Bar  
2"/3"/3.5"/4"  
[ICON-S-NC]

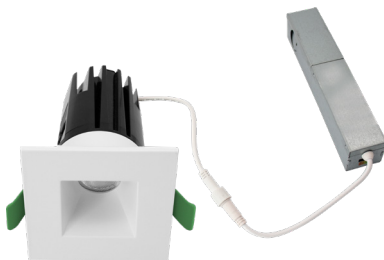


New Construction Kit  
W/ Hanger Bar  
[For Trimless]  
1"/3.5"/4"/5"/6"  
[ICON-S-NC-TL]

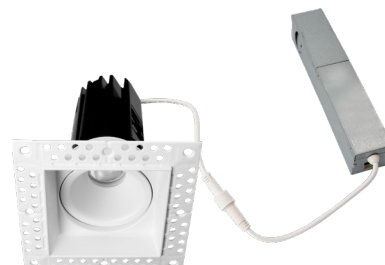


8W  
Emergency Battery Backup  
[EM]

## COMPLETED PRODUCT



ICON S1™  
Square Trim



ICON S1™  
Square Trimless