

CHB-E™  
Circular Select High Bay



APPLICATIONS

Commercial and Industrial

FEATURES

Construction

- Die-cast Aluminum Alloy Housing

Finish

- Black
- White

Electrical & Technical

- Input Voltage: 100-277V
- Input Frequency: 50/60Hz
- Projected Life: L70 > 54,000 hrs
- Power Cord Length: 6' [Standard]
- PF: >0.95
- CRI: 80
- THD: <20%
- Adjustable Lumen Output
- CCT: 4000K or 5000K
- Operating Temp.: -22°F~122°F
- IP Rating: IP65
- IK Rating: IK08
- UGR Level: 26
- Surge Protection: 4kV
- 60W Emergency Inverter [Option]

Optical

- PC Optical Lens
- Beam Angle:
  - 120° [Standard]
  - 90°
  - 60°
- PC Reflectors [Option]
- Aluminum Reflectors [Option]
- Wire Guard [Option]

Installation/Mounting

- Loop Mount [Standard]  
[Chain Not Provided]
- Surface Mount Bracket [Option]
- Pendant Mount [¾" NPT]
- Safety Chain Length: 19.685"  
[Option]

Controls

- 0-10V Dimming [Dims to 10%]
- Bi-level Occupancy/Daylight Harvesting Sensor IP65 [Option]

Lumen Output

- 200W: 28,000lm

Warranty

- 5 Year Warranty
  - 7/10 Year Warranty Available.
- See warranty documentation for more information.



ORDERING INFORMATION

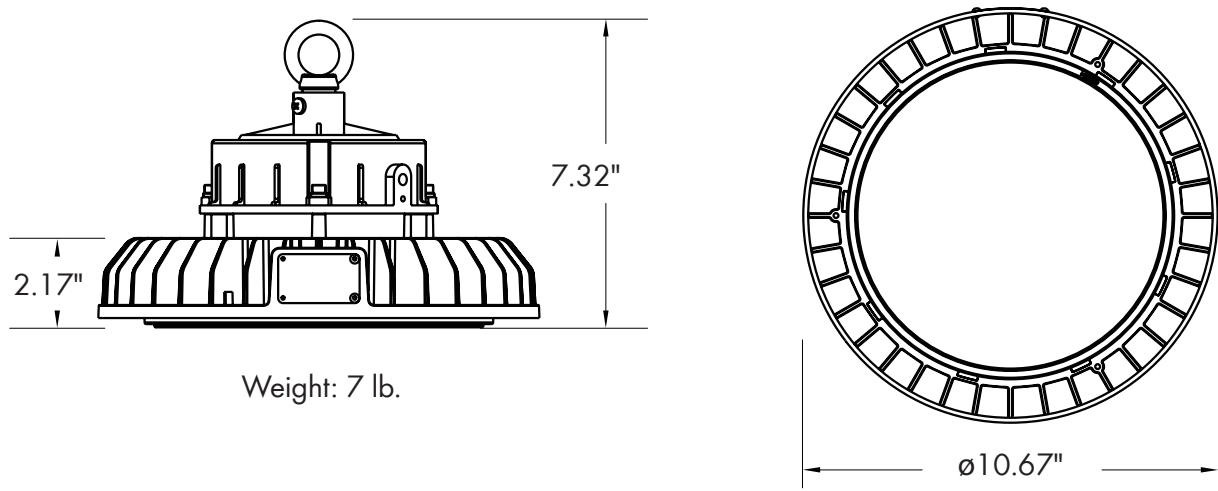
EXAMPLE: CHB-E-L-40-WD-U-D-B-LM

CHB-E								
Series	Wattage	CCT	Beam Angle	Input Voltage	Dimming	Finish	Mounting Option	Controls Option
CHB-E	L - 200W/150W/120W/100W	40 - 4000K 50 - 5000K	WD - 120°	U - 100-277V	D - 0-10V Dimming	B - Black W - White	LM - Loop Mount SM - Surface Mount PM - Pendant Mount 3/4"	M - Bi-level Occupancy/ Daylight Harvesting Sensor [IP65]

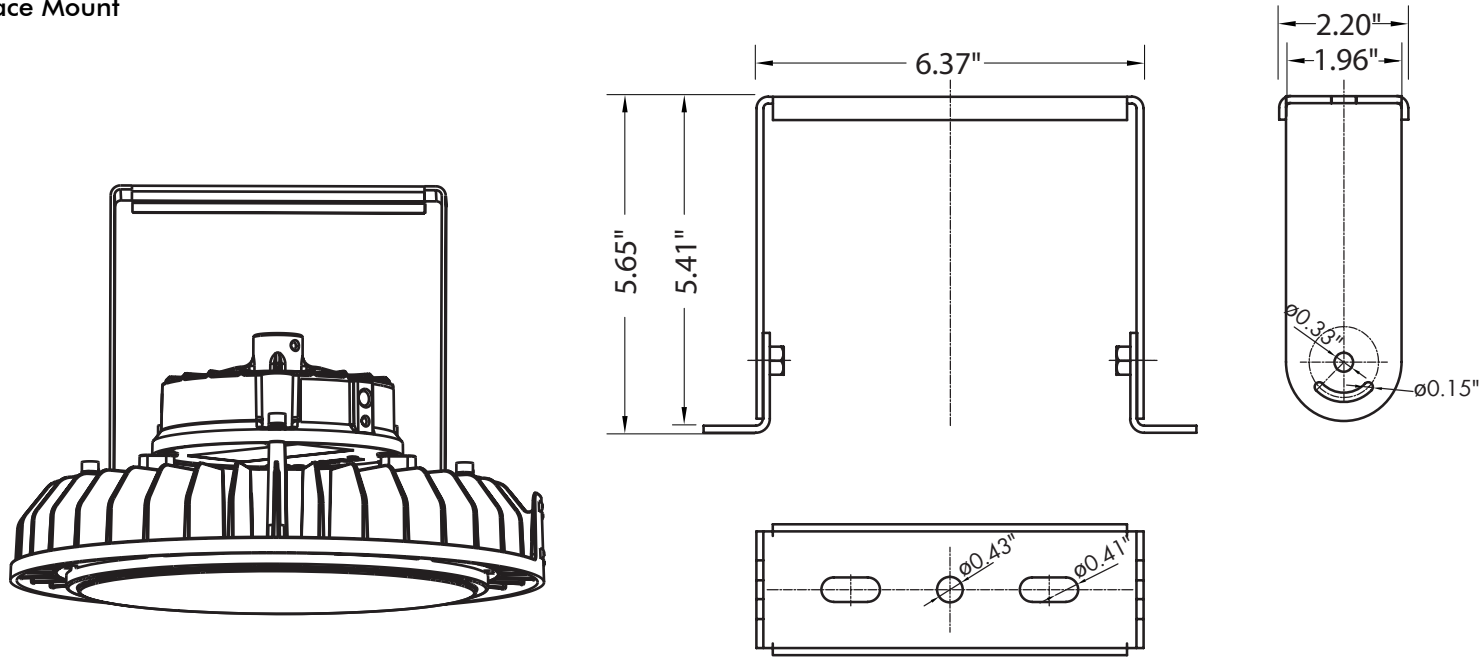
Accessories	Distribution Options
TGS-60W-HB-INT (60W Emergency Inverter) SAFETY-SC (Safety Chain) CHB-E-L-WG-B (Wire Guard - Black) CHB-E-L-WG-W (Wire Guard - White)	CHB-E-LAM (Aluminum Reflector [80°]) CHB-E-LPM (PC Reflector [100°]) CHB-E-LMD (Medium Distribution Optic [90°]) CHB-E-LND (Narrow Distribution Optic [60°]) CHB-E-LLC (Lens Cover For PC Reflector [90°])

DIMENSIONS

Loop Mount



Surface Mount



LUMEN OUTPUT

SKU	Wattage (W)	Delivered Lumens (lm) 100%	Efficacy (lm/W)	Delivered Lumens (lm) 75%	Efficacy (lm/W)	Delivered Lumens (lm) 60%	Efficacy (lm/W)	Delivered Lumens (lm) 50%	Efficacy (lm/W)
CHB-E-L-50-WD-U-D-HM-X	200/150/120/100	28000	140	21000	140	16800	140	14000	140

## ACCESSORIES



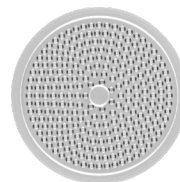
Loop Mount  
(Chain Not Included)  
(Standard)  
[LM]



Surface Mount  
(Tilt 30°)  
(Option)  
[SM]



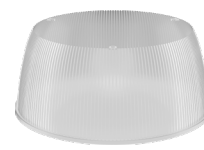
Pendant Mount  
[3/4" NPT]  
(Option)  
[PM]



90° or 60° Optic Lens  
(Option)  
[CHB-E-LMD]  
[CHB-E-LND]



80° Aluminum Reflector  
(Option)  
[CHB-E-LAM]



100° PC Reflector  
(Option)  
[CHB-E-LPM]



PC Reflector  
Lens Cover  
(Option)  
[Turns PC Reflector 90°]  
[CHB-E-LIC]



60W  
Emergency  
Battery Backup  
(Option)  
[TGS-60W-HB-INT]



Bi-level Occupancy/  
Daylight Harvesting  
Sensor [IP65]  
[M]



Safety Chain  
[19.685"]  
(Option)  
[SAFETY-SC]



Wire Guard  
(Option)  
[CHB-E-L-WG-B]  
[CHB-E-L-WG-W]

## CONTROL PRE-COMMISSIONING

Default setting are indicated by\*

High-End Trim/ Tuning	Time Delay	Daylight Harvesting	Stand-by Light Level Setting	Stand-by Time Setting
20% - 8' Height (48' Dia.)	10s	<b>Light Sensor Disabled*</b>	0%	∞
50% - 20' Height (40' Dia.)	1 min	1FC (10lux)	<b>10%*</b>	1 min
75% - 40' Height (60' Dia.)	<b>10min*</b>	3FC (30lux)	30%	30min
<b>100% - 40' Height (100' Dia.)*</b>	15min	5FC (50lux)	50%	<b>60min*</b>

**High-End Trim/Tuning:**

Setting that determines the maximum lumen output through high-end trim tuning, can be reduced by up to 30 percent.

**Sensitivity Range:**

Setting that determines the sensitivity range of the motion sensor when the daylight sensor is disabled.

**Time Delay:**

The light can be set to stay ON for any period of time between approx. 10 sec. to a maximum of 60 min.

Any movement detected before this time elapse will re-start the timer.

**Daylight Harvesting:**

The chosen light response threshold can be disabled or respond when photocell detects foot candle levels 1-5 FC

**Stand-by Light Level:**

Setting determines how much lumen output is dimmed down to when no motion is detected.

**Stand-by Time:**

Setting determines how long after stand-by light level occurs the light will shut off. Up to 60 minutes.