

Date:	
Project Name:	
SKU #:	

**CHB-P™**  
Circular High Bay



**APPLICATIONS**

Commercial, Industrial, and Institution

**FEATURES**

- |   |  |
|---|--|
| <p><b>Construction</b></p> <ul style="list-style-type: none"> <li>- Die-cast Aluminum Housing</li> </ul> <p><b>Electrical &amp; Technical</b></p> <ul style="list-style-type: none"> <li>- Input Voltage: 120-277V<br/>240-480V [Option]</li> <li>- Driver compliant to FCC 47 CFR Part 15b.</li> <li>- Input Frequency: 50/60Hz</li> <li>- Projected Life: L70 &gt; 100,000 hrs</li> <li>- PF: &gt;0.9</li> <li>- CRI: 80</li> <li>- THD: &lt;20%</li> <li>- CCT: 4000K or 5000K</li> <li>- Operating Temp.: -40°F ~ 122°F</li> <li>- IP Rating: IP65</li> <li>- IK Rating: IK10</li> <li>- 6kV Surge Protection [Included]</li> <li>- 10kV Surge Protection [Option]</li> <li>- 6' [14/3, SOW (600V)]/16/3, SJOW (300V)] Rated Power Cable [Included].</li> <li>- 60W Emergency Inverter [Option]</li> </ul> <p><b>Controls</b></p> <ul style="list-style-type: none"> <li>- 1-10V Dimming</li> <li>- Bi-level Occupancy/Daylight Harvesting Sensor [Option]</li> </ul> <p><b>Lumen Output</b></p> <ul style="list-style-type: none"> <li>• 240W: 32,000lm</li> <li>• 300W: 40,500lm</li> </ul> | <p><b>Finish</b></p> <ul style="list-style-type: none"> <li>- Black</li> <li>- White*</li> </ul> <p><b>Optical</b></p> <ul style="list-style-type: none"> <li>- Tempered Glass Lens [Standard]</li> <li>- 120° Beam Angle [Standard]</li> <li>- 60° or 90° PC Optics [Option]</li> <li>- 60° or 90° PC Reflector [Option]</li> <li>- 60° or 90° Alum. Reflector [Option]</li> <li>- Wire Guard [Option]</li> </ul> <p><b>Installation/Mounting</b></p> <ul style="list-style-type: none"> <li>- Hanging Mount [Standard]</li> <li>- ¾" Thread Pendant Mount [Option]</li> <li>- 10' Safety Cable [Option]</li> </ul> <p><b>Warranty</b></p> <ul style="list-style-type: none"> <li>- 5 Year Warranty</li> <li>- 7/10 Year Warranty Available.</li> </ul> <p>See warranty documentation for more information.</p> |
|---|--|



**ORDERING INFORMATION** **EXAMPLE: CHB-P-150W-50K-WD-U-D-B-HM-BAA**

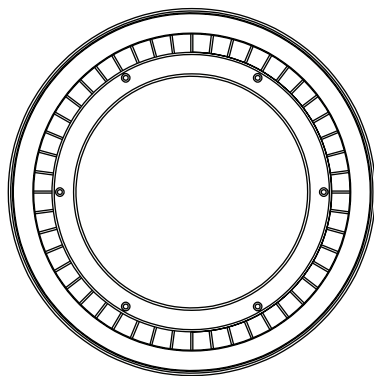
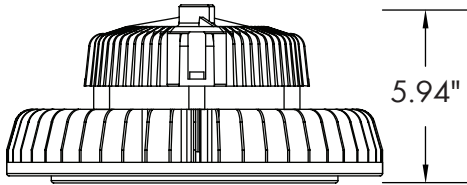
Series	Wattage	CCT	Beam Angle	Input Voltage	Dimming	Finish	Mounting Options	Controls Option	BAA
CHB-P	240W 300W	40 - 4000K 50 - 5000K	WD - 120°	U - 100-277V H - 240-480V	D - 1-10V Dimming	B - Black W - White*	HM - Hanging Mount PM - ¾" Pendant Mount SM - Surface Mount	M - Bi-level Occupany/ Daylight Harvesting Sensor [IP65]	BAA

**Accessories** **Distribution Options**

- |  |   |
|--|---|
| <ul style="list-style-type: none"> <li>CHB-P-WG-B ( Black Wire Guard)</li> <li>CHB-P-WG-W (White Wire Guard)</li> <li>L7-15 (NEMA Twist Lock Plug [120-277V/15 Amp])</li> <li>L7-20 (NEMA Twist Lock Plug [120-277V/20 Amp])</li> <li>CHB-P-SP (10kV Surge Protector)</li> <li>SAFETY-SS-10FT (10' Safety Cable)</li> <li>TGS-60W-HB-INT (60W Emergency Inverter)</li> </ul> | <ul style="list-style-type: none"> <li>CHB-P-AM (Aluminum Reflector [90°])</li> <li>CHB-P-PAN (Aluminum Reflector [60°])</li> <li>CHB-P-PM-16 (PC Reflector [90°])</li> <li>CHB-P-PN-16 (PC Reflector [60°])</li> <li>CHB-P-LC (PC Reflector Lens Cover)</li> <li>CHB-P-MD (Medium Distribution [90°])</li> <li>CHB-P-ND (Narrow Distribution [60°])</li> </ul> |
|--|---|

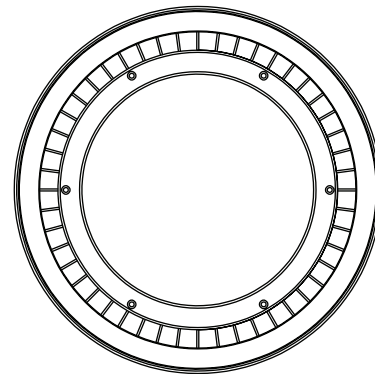
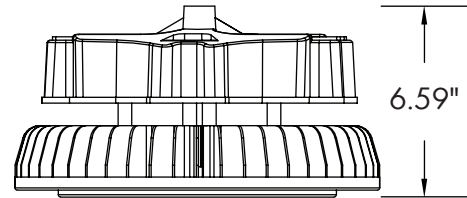
DIMENSIONS

240W



Weight: 12 lb.

300W

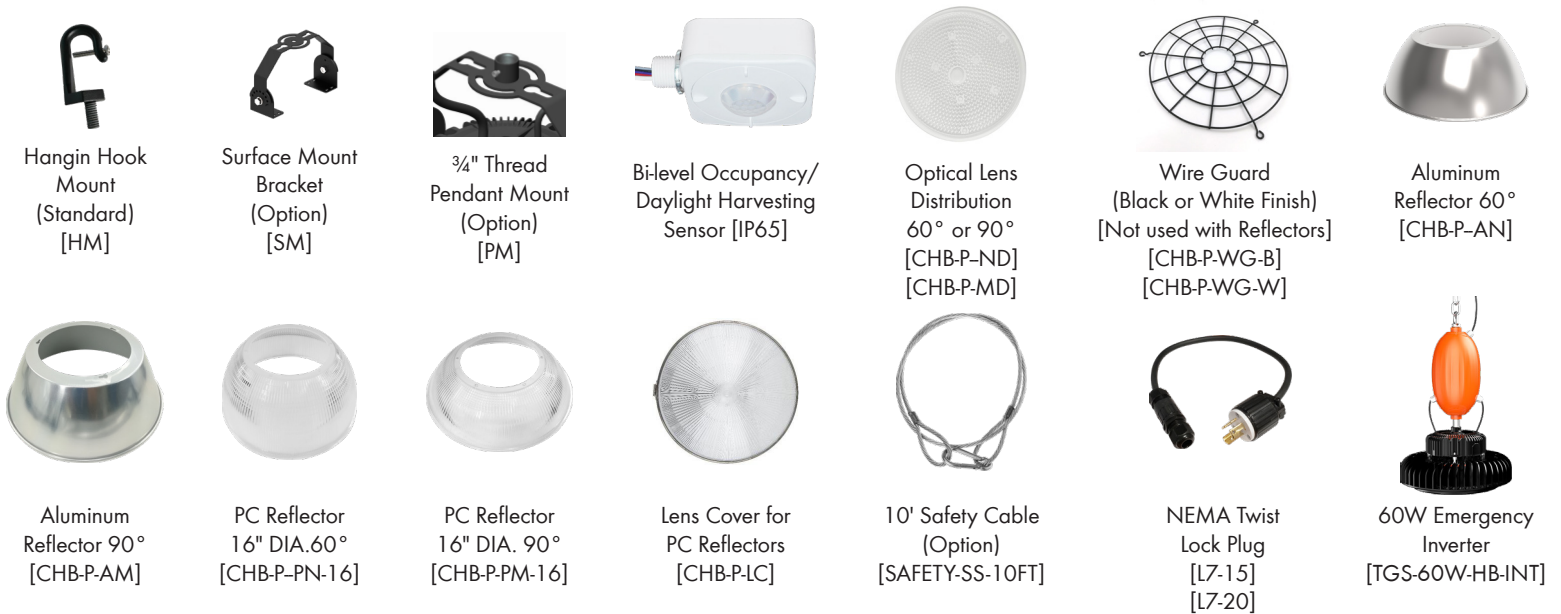


Weight: 14 lb.

LUMEN OUTPUT

SKU	Wattage (W)	Delivered Lumens (lm)	Efficacy (lm/W)
CHB-P-240W-50K-WD-U-D-B-HM-BAA	240	31200	132
CHB-P-300W-50K-WD-U-D-B-HM-BAA	300	39000	130

ACCESSORIES



Hangin Hook Mount (Standard) [HM]

Surface Mount Bracket (Option) [SM]

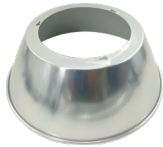
3/4" Thread Pendant Mount (Option) [PM]

Bi-level Occupancy/Daylight Harvesting Sensor [IP65]

Optical Lens Distribution 60° or 90° [CHB-P-ND] [CHB-P-MD]

Wire Guard (Black or White Finish) [Not used with Reflectors] [CHB-P-WG-B] [CHB-P-WG-W]

Aluminum Reflector 60° [CHB-P-AN]



Aluminum Reflector 90° [CHB-P-AM]



PC Reflector 16" DIA. 60° [CHB-P-PN-16]



PC Reflector 16" DIA. 90° [CHB-P-PM-16]



Lens Cover for PC Reflectors [CHB-P-LC]



10' Safety Cable (Option) [SAFETY-SS-10FT]



NEMA Twist Lock Plug [L7-15] [L7-20]



60W Emergency Inverter [TGS-60W-HB-INT]

CONTROL PRE-COMMISSIONING

Default setting are indicated by\*

High-End Trim/Tuning	Time Delay	Daylight Harvesting	Stand-by Light Level Setting	Stand-by Time Setting
20% - 8' Height (48' Dia.)	10s	<b>Light Sensor Disabled*</b>	0%	∞
50% - 20' Height (40' Dia.)	1min	1FC (10lux)	<b>10%*</b>	1min
75% - 40' Height (60' Dia.)	<b>10min*</b>	3FC (30lux)	30%	30min
<b>100% - 40' Height (100' Dia.)*</b>	15min	5FC (50lux)	50%	<b>60min*</b>

**High-End Trim/Tuning:**

Lighting electricity usage can be reduced by 30 percent or more through high-end trim, which sets the maximum light level for each space. High-end trim/tuning sets the appropriate target brightness for each space to the prefer light levels to minimize glare and increase comfort level.

**Time Delay:**

The light can be set to stay ON for any period of time between approx. 10sec and the maximum of 60 min. Any movement detected before this time elapses will re-start the timer.

**Daylight Harvesting:**

The chosen light response threshold can be infinitely from approx. 10-50lux.

**Stand-by Light Level:**

How much light is dimmed when no motion is detected.

**Stand-by Time:**

How much time after dimming will the light will shut off. Up to 60 minutes after the light has dimmed the light will shut off.