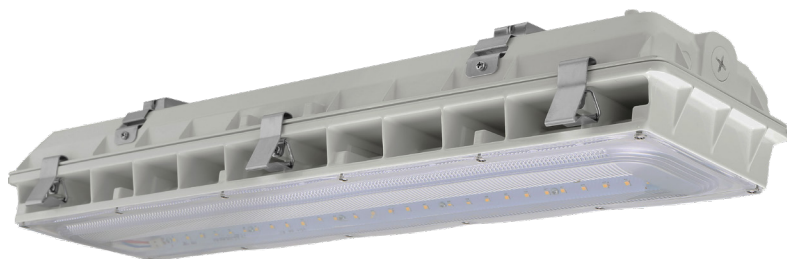


Date:	
Project Name:	
SKU #:	

**ILB™**  
Industrial Low Bay



**APPLICATIONS**

Commercial and Industrial

**FEATURES**

**Construction**

- Die-cast Aluminum Housing
- Stainless Steel Clips
- Integrated Slot Design for Passive Cooling & Thermal Management

**Finish**

- Matte White

**Electrical & Technical**

- Input Voltage: 120-277V
- Input Frequency: 50/60Hz
- Projected Life: L70 > 100,000 hrs
- PF: >0.9
- CRI: 80
- THD: <20%
- CCT: 4000K or 5000K
- Operating Temp.: 40F~113°F
- Wet Location Rated
- Emergency Battery Backup [Factory Installed]

**Optical**

- Diffused PC Lens
- 110° Beam Angle

**Installation/Mounting**

- Surface Mount [Standard]
- Hanging Mount Kit

**Controls**

- 1-10V Dimming
- External Bi-level Occupancy/Daylight Harvesting Sensor Option

**Lumen Output**

- 45W: 5,400lm
- 70W: 8,400lm
- 95W: 11,400lm

**Warranty**

- 5 Year Warranty
- See warranty documentation for more information.



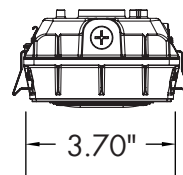
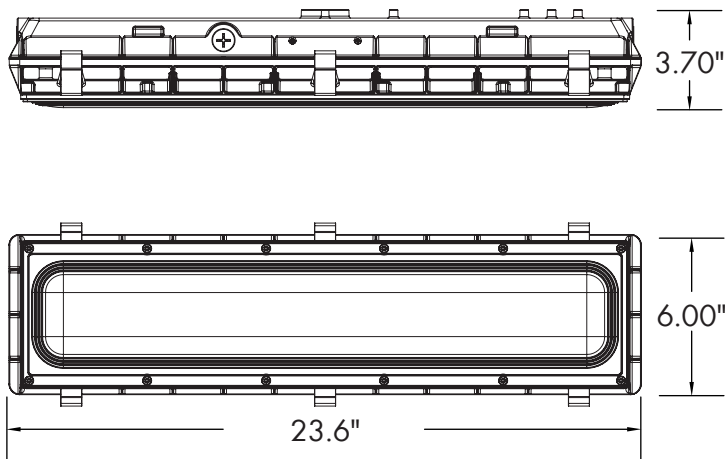
**ORDERING INFORMATION** **EXAMPLE: ILB-95W-40K-U-D-W-SM**

Series	Wattage	CCT	Input Voltage	Dimming	Finish	Mounting Option	Control Option	EM Battery Option
ILB	45W 70W 95W	40K - 4000K 50K - 5000K	U - 120-277V	D - 1-10V Dimming	W- White	SM - Surface Mount HM - Hanging Mount Kit	M - Bi-level Occupancy/ Daylight Harvesting Sensor	EM - EM Battery Backup

**Accessories**

- RC-RC-100 (TGS - Wireless Configuration Tool)
- ILB-JBM (J- Box Surface Mount Plate)
- ILB-CH (6' Hanging Chain Mount)

**DIMENSIONS**



Weight: 7.05 lb. (45W)  
Weight: 8.03 lb. (70W)  
Weight: 8.20 lb. (95W)

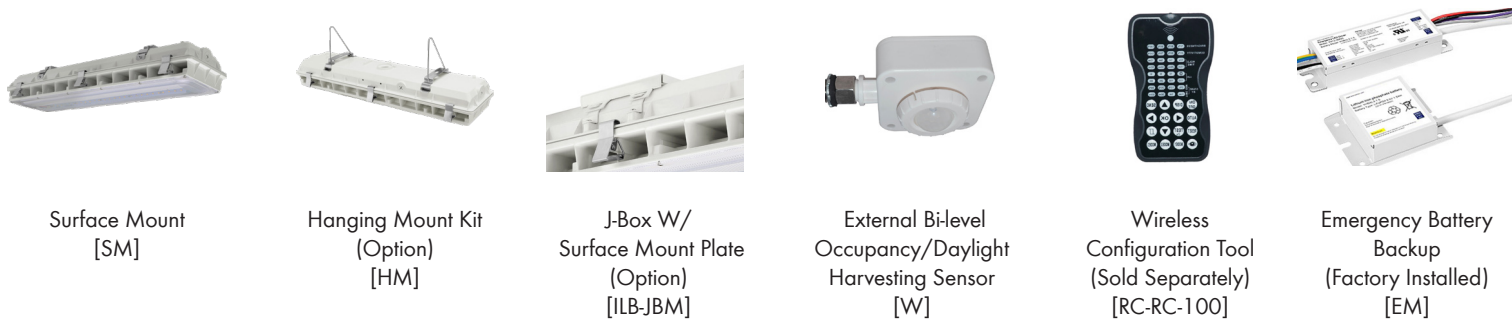
**LUMEN OUTPUT**

SKU	Wattage (W)	Delivered Lumens (lm)	Efficacy (lm/W)
ILB-45W-40K-D-W-SM	45	5400	120
ILB-70W-40K-D-W-SM	70	8400	120
ILB-95W-40K-D-W-SM	95	11400	120

**ELECTRICAL LOAD**

Wattage (W)	Driver Current (mA)	Current (A)			
		120V	208V	240V	277V
45W	1120	0.38	0.22	0.19	0.16
70W	1750	0.58	0.34	0.29	0.25
95W	2500	0.79	0.46	0.40	0.34

**ACCESSORIES**



## CONTROL PRE-COMMISSIONING

Default setting are indicated by\*

High-End Trim/ Tuning	Sensitivity Range	Time Delay	Daylight Harvesting	Stand-by Light Level Setting	Stand-by Time Setting
70%	70%	10s	<b>Light Sensor Disabled*</b>	0%	∞
80%	50%	1min	1FC (10lux)	<b>10%*</b>	1min
90%	70%	<b>5min*</b>	3FC (30lux)	30%	30min
<b>100%*</b>	<b>100%*</b>	15min	5FC (50lux)	50%	<b>60min*</b>

### High-End Trim/Tuning:

Setting that determines the maximum lumen output through high-end trim tuning, can be reduced by up to 30 percent.

### Sensitivity Range:

Setting that determines the sensitivity range of the motion sensor when the daylight sensor is disabled.

### Time Delay:

The light can be set to stay ON for any period of time between approx. 10 sec. to a maximum of 60 min. Any movement detected before this time elapse will re-start the timer.

### Daylight Harvesting:

The chosen light response threshold can be disabled or respond when photocell detects foot candle levels 1-5 FC

### Stand-by Light Level:

Setting determines how much lumen output is dimmed down to when no motion is detected.

### Stand-by Time:

Setting determines how long after stand-by light level occurs the light will shut off. Up to 60 minutes.