

Date:	
Project Name:	
SKU #:	

**LSL™**  
Linear Strip Light



**APPLICATIONS**

Commercial and Industrial

**FEATURES**

**Construction**

- Die-formed Cold-Rolled Steel Body

**Finish**

- Matte White

**Electrical & Technical**

- Input Voltage: 120-277V
- Input Frequency: 50/60Hz
- Projected Life: L70 > 100,000 hrs
- PF: >0.9
- CRI: >80
- THD: <20%
- Adjustable Lumen Output
- CCT Selectable:  
3000K/3500K/4000K/5000K
- Operating Temp.: -40F ~ 104°F
- 8W Emergency Battery Backup  
[Factory Installed] [Only For 120-277V]

**Optical**

- Diffused PC Lens
- 120° Beam Angle

**Installation/Mounting**

- Surface Mount [Standard]
- Hanging Chain: 4'
- Hanging Wire: 4" Adjustable

**Controls**

- 0-10V Dimming
- Internal Bi-level Motion/Daylight Harvesting Sensor [Option] [Factory Installed]

**Lumen Output**

- L1:
- 15W: 1,950lm
  - 20W: 2,600lm
  - 25W: 3,250lm
- L2:
- 25W: 2,600lm
  - 30W: 3,900lm
  - 40W: 5,200lm

**Warranty**

- 5 Year Warranty  
See warranty documentation for more information.



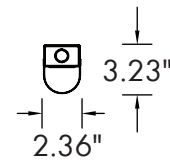
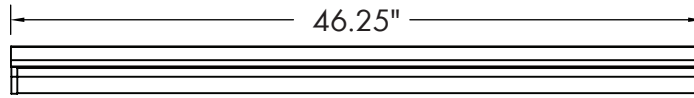
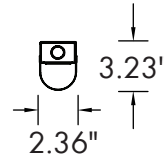
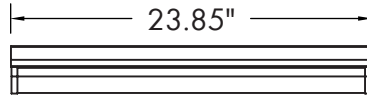
**ORDERING INFORMATION** **EXAMPLE: LSL-4-L2-C-U-D-SM**

Series	Length	Wattage	CCT	Input Voltage	Dimming	Mounting Option	Control Option	EM Battery Option
LSL	2 - 2'	L1 - 15W/20W/25W	C - 3000K/3500K/4000K/5000K	U - 120-277V	D - 0-10V Dimming	SM - Surface Mount HC - Hanging Chain HW - Hanging Wire	M - Bi-level Motion/ Daylight Harvesting Sensor	EM - EM Battery Backup
	4 - 4'	L2 - 25W/30W/40W						

**Accessories**

- LSL-WG1 (2' Wire Guard)
- LSL-WG2 (4' Wire Guard)

**DIMENSIONS**



**LUMEN OUTPUT**

SKU	Length (ft)	Wattage (W)	Delivered Lumens (lm)	Efficacy (lm/W)	Delivered Lumens (lm)	Efficacy (lm/W)	Delivered Lumens (lm)	Efficacy (lm/W)
LSL-2-L1-C-U-D-SM	2	15/20/25	1950 (15W)	130	2600 (20W)	130	3250 (25W)	130
LSL-4-L2-C-U-D-SM	4	25/30/40	2600 (25W)	130	3900 (30W)	130	5200 (40W)	130

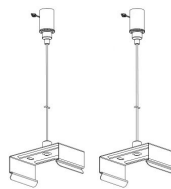
**ACCESSORIES**



Junction Box  
Plate Cover  
Surface Mount  
[Included]



Hanging Chain  
Mount  
[HC]



Hanging Wire  
Mount  
[HW]



8W Emergency  
Battery Backup  
(Factory Installed)  
[EM]



Internal Bi-level Motion/  
Daylight Harvesting Sensor  
(Factory Installed)  
[M]



Wire Guard  
[LSL-WG1 (2' Wire Guard)]  
[LSL-WG2 (4' Wire Guard)]

## CONTROL PRE-COMMISSIONING

Default setting are indicated by\*

Detection Angle	Time Delay	Daylight Harvesting	Stand-by Light Level Setting	Stand-by Time Setting
50%	1 min	<b>Light Sensor Disabled*</b>	10%	∞
<b>100%*</b>	<b>10min*</b>	1FC (10lux)	<b>20%*</b>	1 min
	20min	3FC (30lux)	30%	30min
	30min	5FC (50lux)	50%	<b>60min*</b>

### Detection Angle:

Setting that determines the maximum lumen output for each space through when motion is detection.

### Time Delay:

The light can be set to stay ON for any period of time between approx. 10 sec. to a maximum of 60 min. Any movement detected before this time elapse will re-start the timer.

### Daylight Harvesting:

The chosen light response threshold can be disabled or respond when photocell detects foot candle levels 1-5 FC

### Stand-by Light Level:

Setting determines how much lumen output is dimmed down to when no motion is detected.

### Stand-by Time:

Setting determines how long after stand-by light level occurs the light will shut off. Up to 60 minutes.