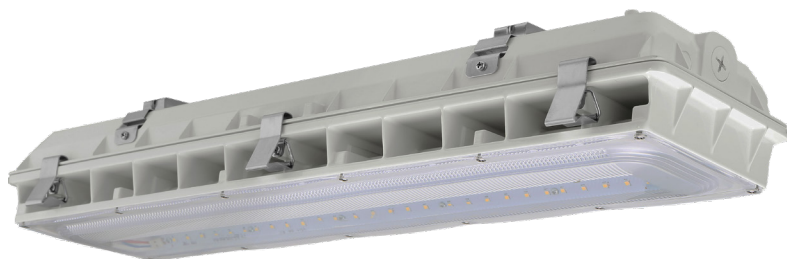


Date:	
Project Name:	
SKU #:	

ILB™
Industrial Low Bay



APPLICATIONS

Commercial and Industrial

FEATURES

Construction

- Die-cast Aluminum Housing
- Stainless Steel Clips
- Integrated Slot Design for Passive Cooling & Thermal Management

Finish

- Matte White

Electrical & Technical

- Input Voltage: 120-277V
- Input Frequency: 50/60Hz
- Projected Life: L70 > 100,000 hrs
- PF: >0.9
- CRI: 80
- THD: <20%
- CCT: 4000K or 5000K
- Operating Temp.: 40F~113°F
- Wet Location Rated
- Emergency Battery Backup [Factory Installed]

Optical

- Diffused PC Lens
- 110° Beam Angle

Installation/Mounting

- Surface Mount [Standard]
- Hanging Mount Kit

Controls

- 1-10V Dimming
- External Bi-level Occupancy/Daylight Harvesting Sensor Option

Lumen Output

- 45W: 5,400lm
- 70W: 8,400lm
- 95W: 11,400lm

Warranty

- 5 Year Warranty
- See warranty documentation for more information.



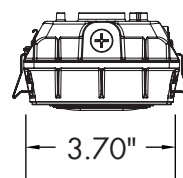
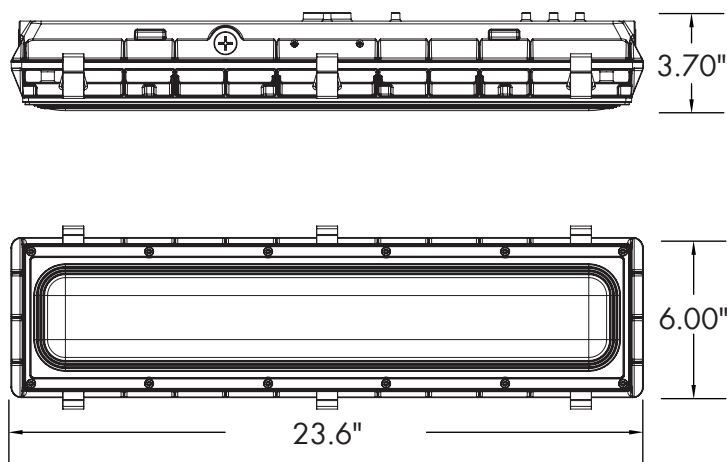
ORDERING INFORMATION **EXAMPLE: ILB-95W-40K-U-D-W-SM**

Series	Wattage	CCT	Input Voltage	Dimming	Finish	Mounting Option	Control Option	EM Battery Option
ILB	45W 70W 95W	40K - 4000K 50K - 5000K	U - 120-277V	D - 1-10V Dimming	W- White	SM - Surface Mount HM - Hanging Mount Kit	M - Bi-level Occupancy/ Daylight Harvesting Sensor	EM - EM Battery Backup

Accessories

- RC-RC-100 (TGS - Wireless Configuration Tool)
- ILB-JBM (J- Box Surface Mount Plate)
- ILB-CH (6' Hanging Chain Mount)

DIMENSIONS



Weight: 7.05 lb. (45W)
Weight: 8.03 lb. (70W)
Weight: 8.20 lb. (95W)

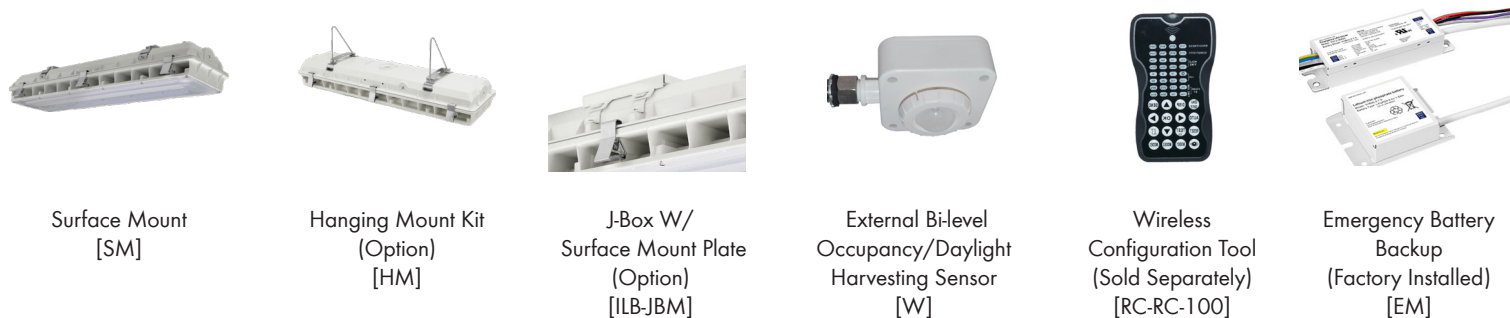
LUMEN OUTPUT

SKU	Wattage (W)	Delivered Lumens (lm)	Efficacy (lm/W)
ILB-45W-40K-D-W-SM	45	5400	120
ILB-70W-40K-D-W-SM	70	8400	120
ILB-95W-40K-D-W-SM	95	11400	120

ELECTRICAL LOAD

Wattage (W)	Driver Current (mA)	Current (A)			
		120V	208V	240V	277V
45W	1120	0.38	0.22	0.19	0.16
70W	1750	0.58	0.34	0.29	0.25
95W	2500	0.79	0.46	0.40	0.34

ACCESSORIES



CONTROL PRE-COMMISSIONING

Default setting are indicated by*

High-End Trim/ Tuning	Sensitivity Range	Time Delay	Daylight Harvesting	Stand-by Light Level Setting	Stand-by Time Setting
70%	70%	10s	Light Sensor Disabled*	0%	∞
80%	50%	1min	1FC (10lux)	10%*	1min
90%	70%	5min*	3FC (30lux)	30%	30min
100%*	100%*	15min	5FC (50lux)	50%	60min*

High-End Trim/Tuning:

Setting that determines the maximum lumen output through high-end trim tuning, can be reduced by up to 30 percent.

Sensitivity Range:

Setting that determines the sensitivity range of the motion sensor when the daylight sensor is disabled.

Time Delay:

The light can be set to stay ON for any period of time between approx. 10 sec. to a maximum of 60 min. Any movement detected before this time elapse will re-start the timer.

Daylight Harvesting:

The chosen light response threshold can be disabled or respond when photocell detects foot candle levels 1-5 FC

Stand-by Light Level:

Setting determines how much lumen output is dimmed down to when no motion is detected.

Stand-by Time:

Setting determines how long after stand-by light level occurs the light will shut off. Up to 60 minutes.