



# Veil Series

Thomas Murphy, President



tgs

# Course Overview

01

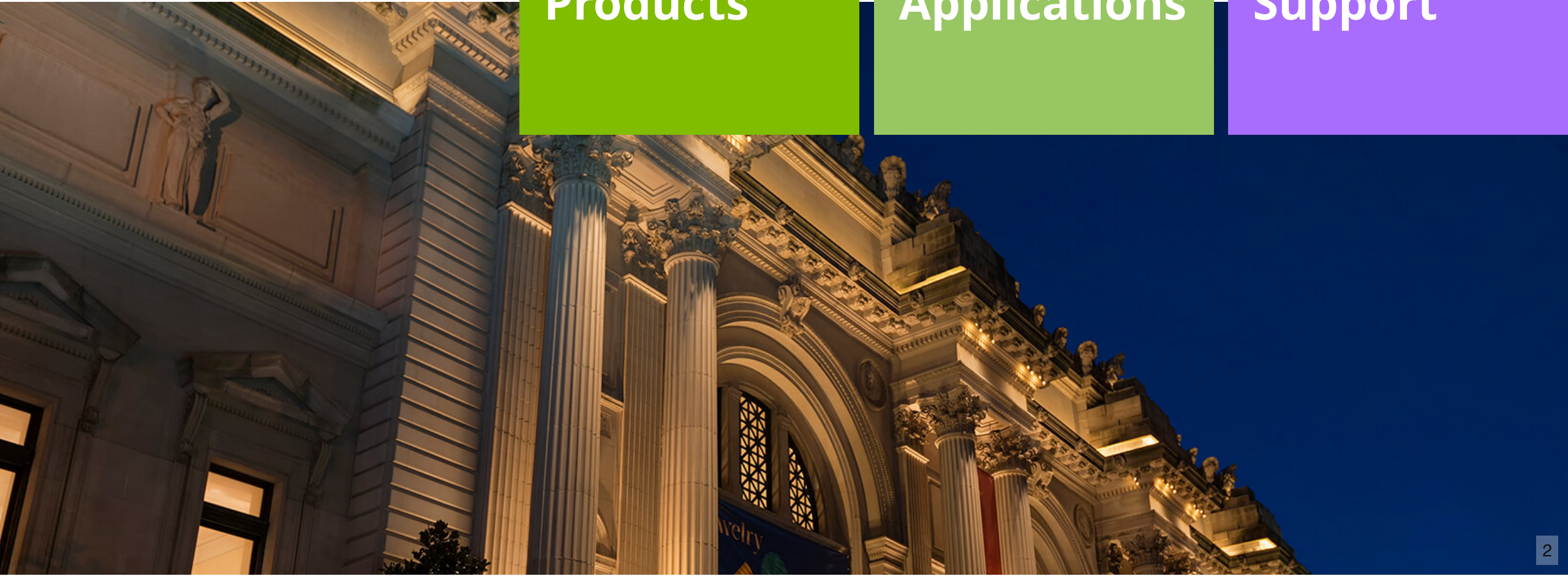
Family of  
Products

02

Features &  
Applications

03

Ordering &  
Support



# Family of Products

*Interior: Veil LCL*

*Exterior: Veil EX*





**Lengths**  
1 foot or 4 foot

**Finish**  
Anodized Aluminum



# Veil LCL *Interior Linear Cove Light*

*Beam Angle of Shown Product: 25° x 70°*



Field  
Selectable



90+ CRI



Power  
Selectable

**3000K**

**3500K**

**4000K**

*Beam Angle Shown: 25° x 70°*



Field  
Selectable



90+ CRI



Power  
Selectable

**1 FT:** 5W (600 lm)  
**4 FT:** 20W (2,400 lm)

**1 FT:** 7.5W (900 lm)  
**4 FT:** 30W (3,600 lm)

**1 FT:** 10W (1,200 lm)  
**4 FT:** 40W (4,800 lm)

**Line Voltage**

**Extruded Aluminum Housing**

**+/-90° Rotatable Mounting**

**0-10V Dimming**

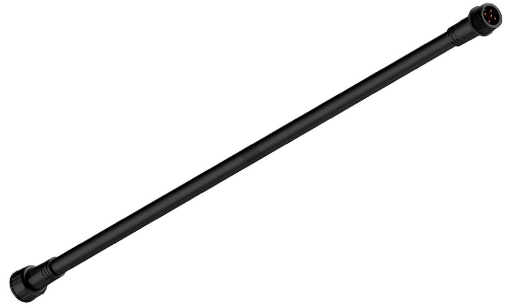


**Run Length Limit**

**1 Foot**

**4 Feet**

Input Wattage	5W	7.5W	10W	20W	30W	40W
Maximum Length (120V)	144'	96'	72'	144'	96'	72'
Maximum Length (277V)	330'	220'	165'	332'	220'	165'



## Extension Cable

1' | 3' | 12'



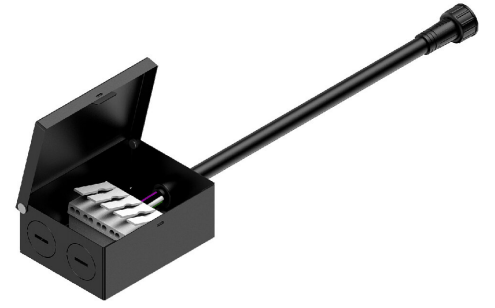
## Positioning Track

Aluminum 7.97'



## Positioning Track

PC 82' / Roll



## Power Harness Box

Included

# Accessories



# Cove

## Beam Angles

80° | 40° x 70° | 50°

# Graze

## Beam Angles

25° x 70° | 40° x 70° | 20°





# Wash

**Beam Angles**

110° | 80° | 50°

# Asymmetric

## Beam Angles

25° x 70° | 40° x 70°



## Lengths

1 foot or 4 foot

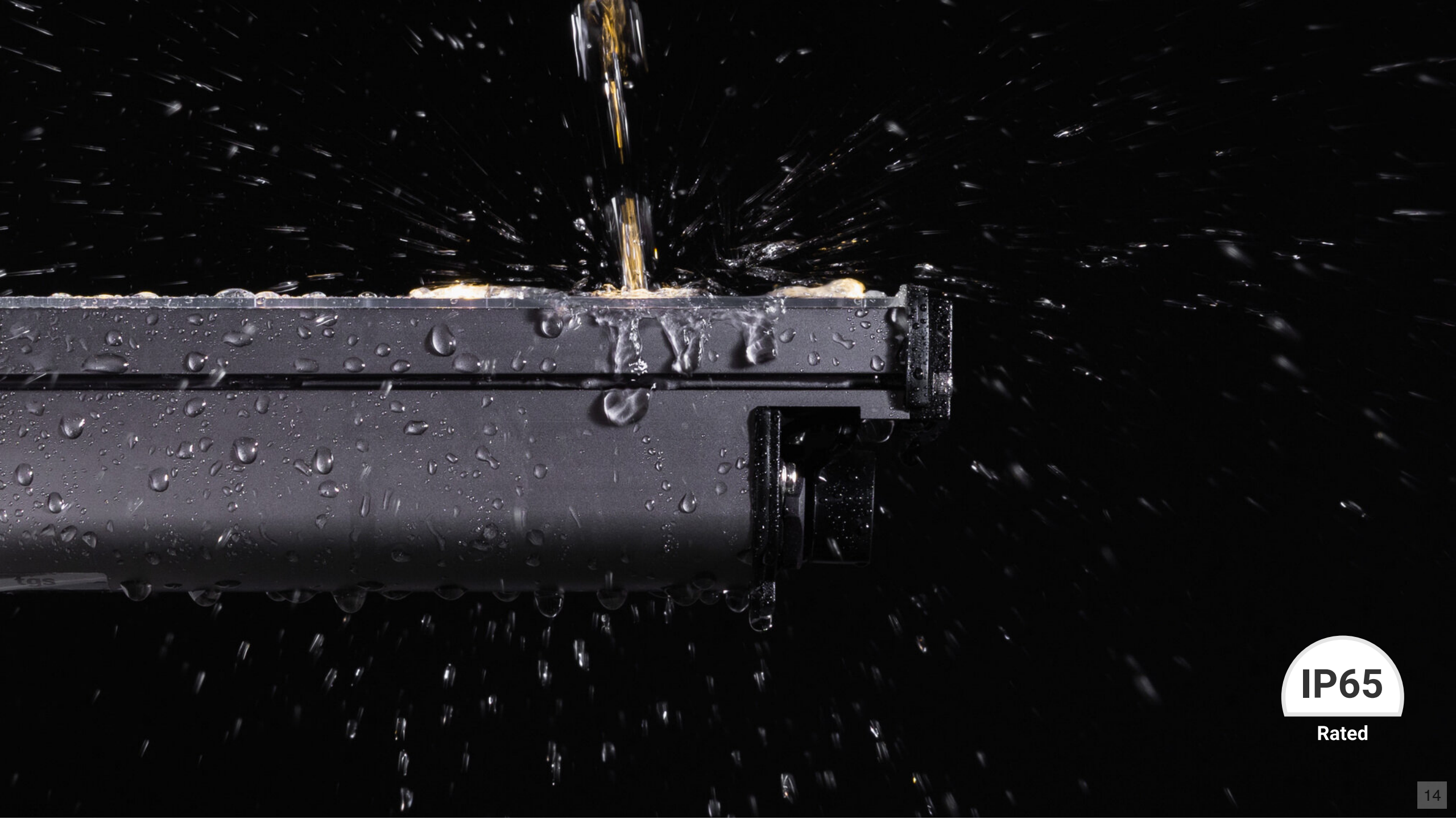
## Finish

Anodized Aluminum



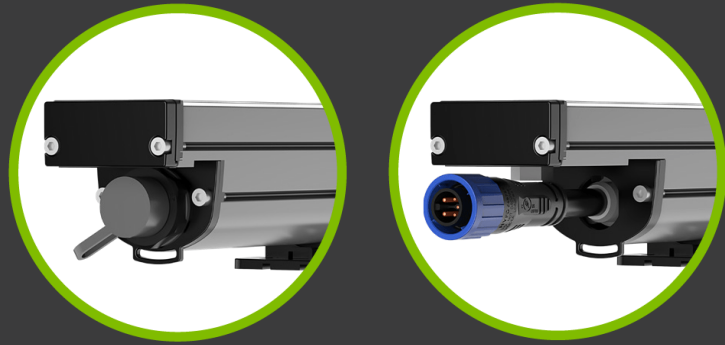
**Veil EX** *Exterior Building & Façade Light*

*Beam Angle of Shown Product: 15° x 40°*

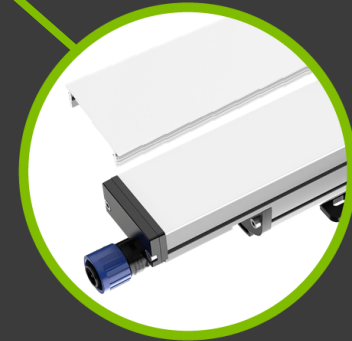
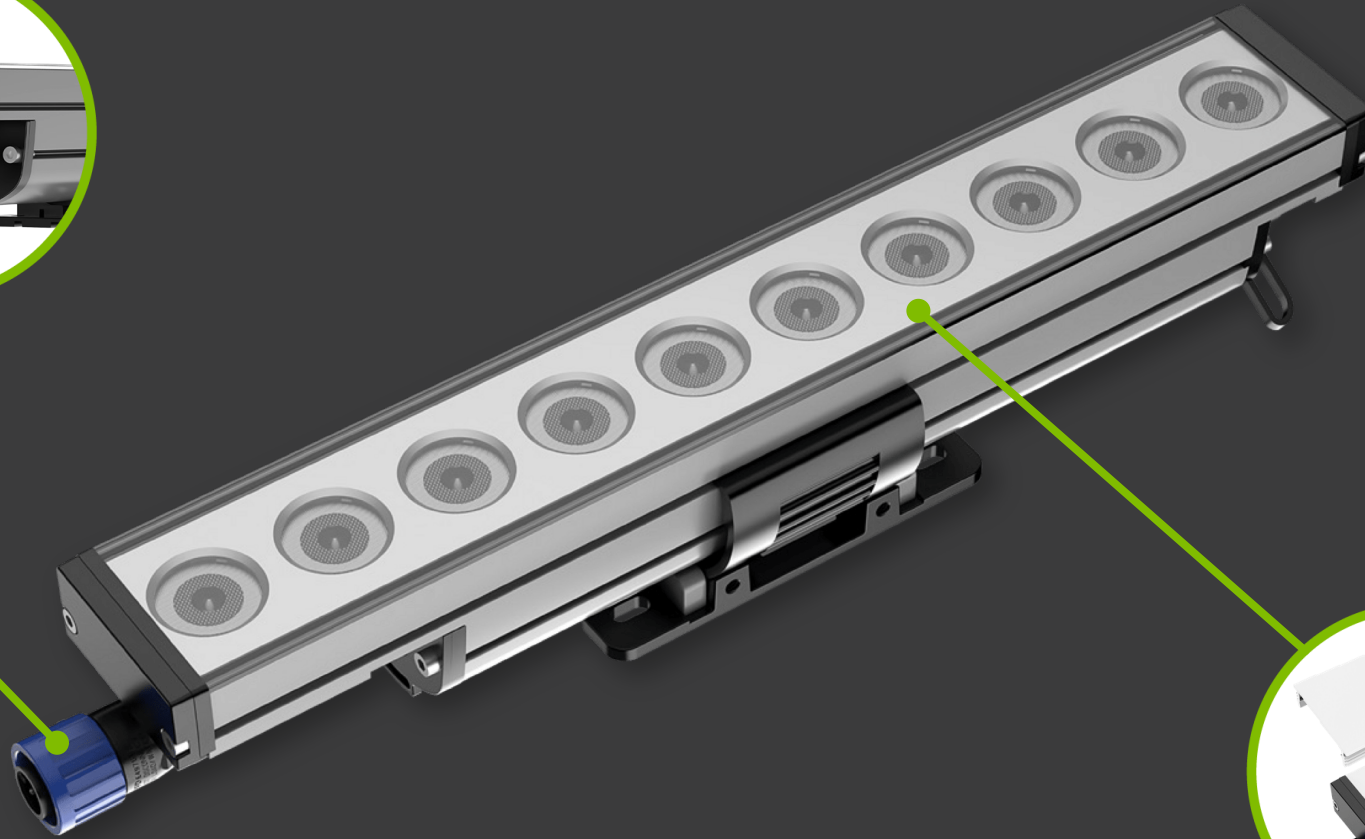


**IP65**

Rated



**Waterproof  
Connectors**

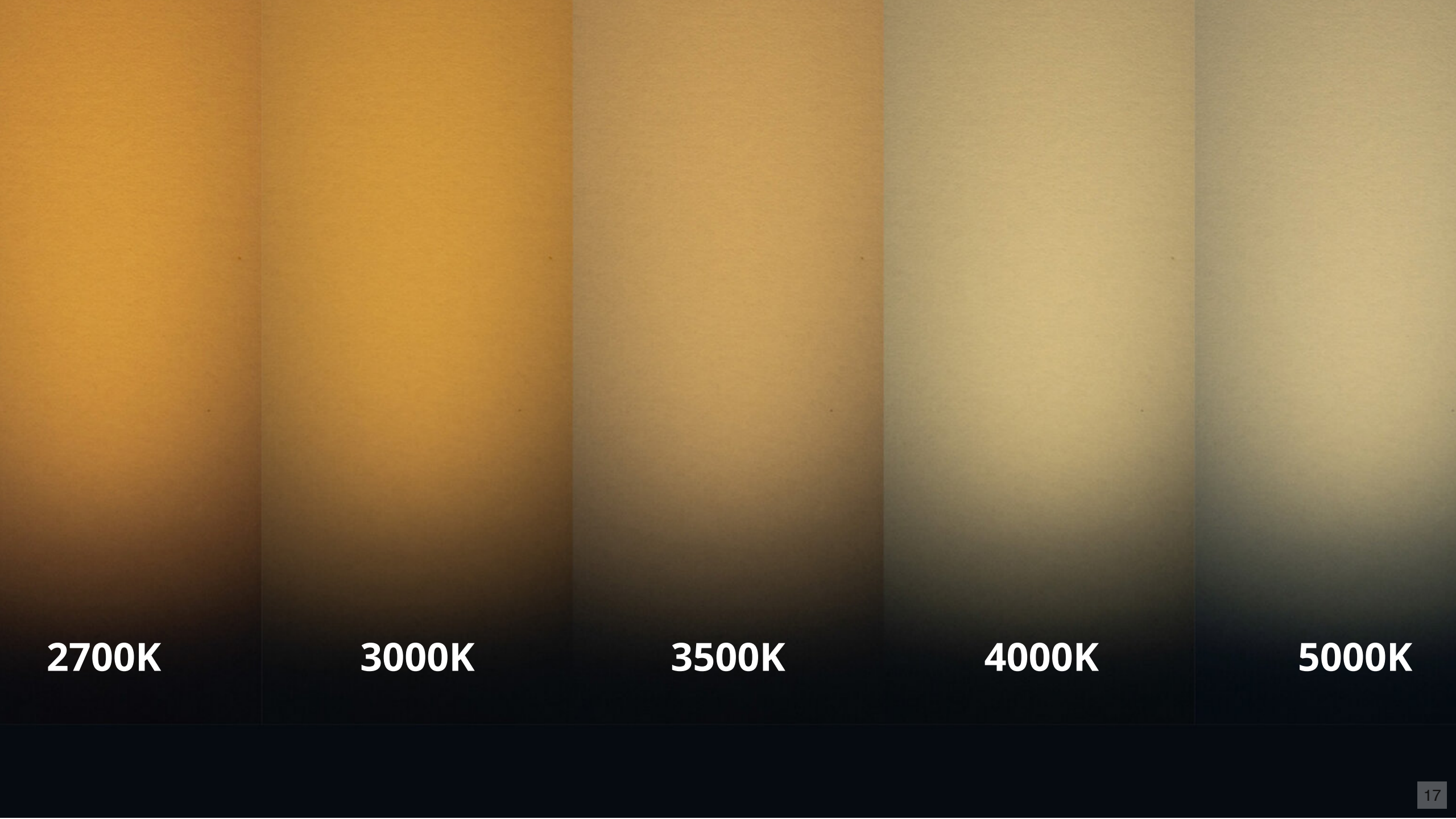


**CO-Extruded  
Diffuser**

# Features

**1 FT: 10W (900 lm)**

**4 FT: 40W (3,600 lm)**



**2700K**

**3000K**

**3500K**

**4000K**

**5000K**

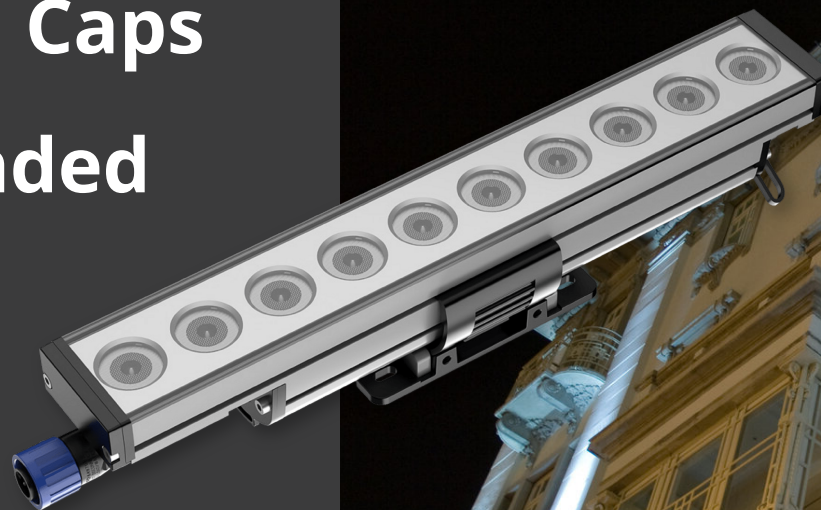
**Operating Temp: -13°F to 122°F**

**Line Voltage**

**Anodized Extruded Aluminum Housing & Die-Cast End Caps**

**Self-Locking, Double-Ended Connectors**

**0-10V Dimming**



**Run Length Limit**

**1 Foot**

**4 Feet**

<b>Input Wattage</b>	<b>10W</b>	<b>40W</b>
Maximum Length (120V)	72'	72'
Maximum Length (277V)	165'	165'



## Extension Cable

1' | 3' | 12'



## Positioning Track

Aluminum 8'



## IP65 Power Harness Box

Included

# Accessories

**Distribution: 7° x 7°**

**Distribution: 10° x 10°**

**Distribution: 36° x 36°**

**7.1°**

**10.9°**

**14.5°**

# Distributions

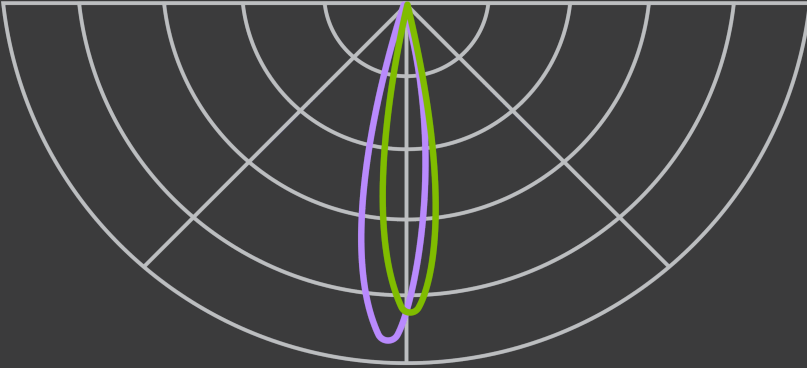
**Wattages: 10W**

**CCT: 4000K**

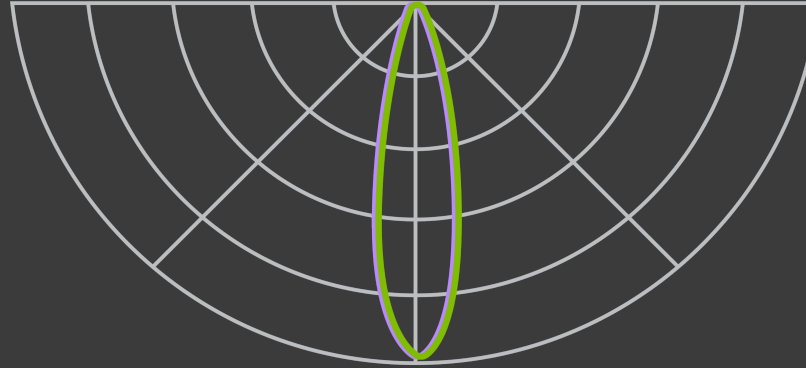
**Distribution: 18° x 18°**

**Distribution: 24° x 24°**

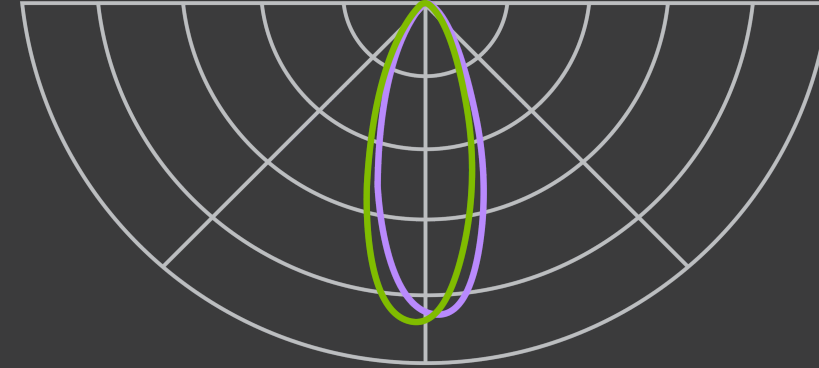
**Distribution: 36° x 36°**



18.3°



23.6°

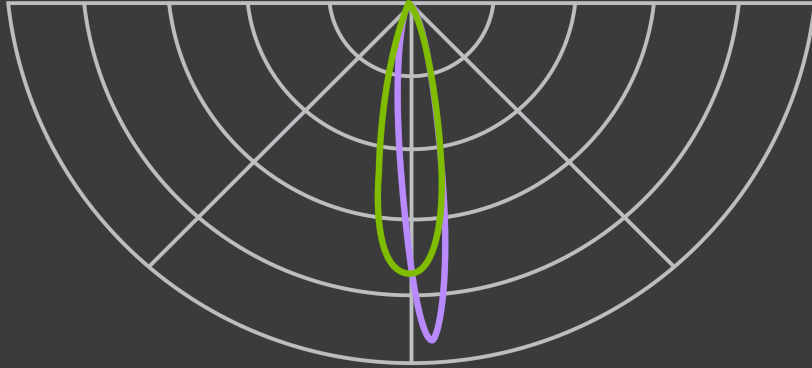


35.5°

# Distributions

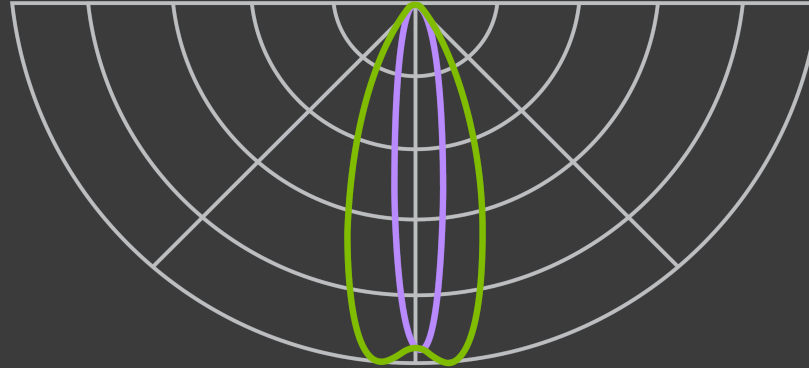
**Wattages: 10W**  
**CCT: 4000K**

**Distribution: 12° x 24°**



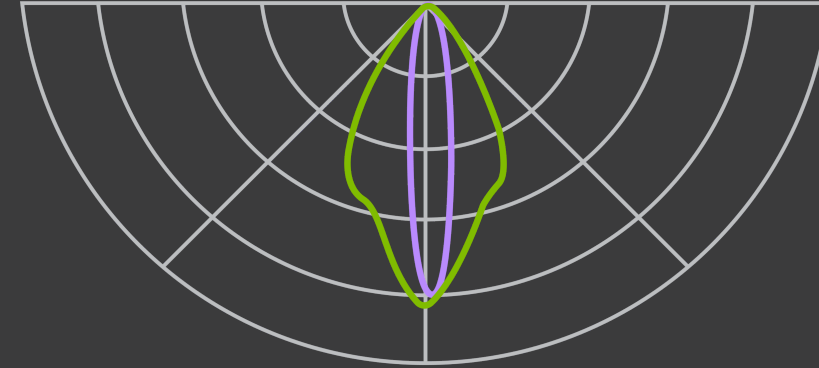
**17.7°**

**Distribution: 15° x 40°**



**28.2°**

**Distribution: 15° x 55°**



**35.3°**

# Distributions

**Wattages: 10W**

**CCT: 4000K**

# Competitors



## EcoSense

TROV Series

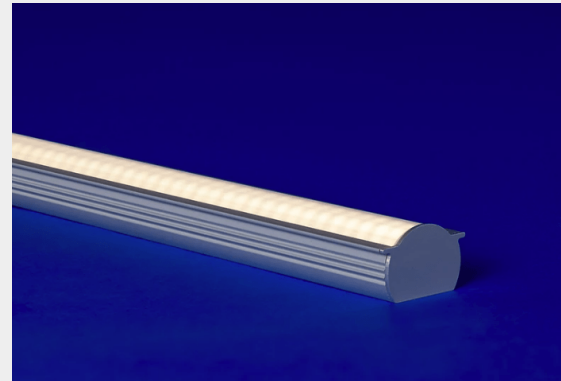
Interior & Exterior



## LumenPulse

Lumencore Series

Interior & Exterior



## QTL Lighting

Quova Series

Indoor Only



## Solid State Luminaires

CoveLine &  
ColourLine

Interior & Exterior

## Veil EX

- DMX Controlled - In Testing
- RGBW - In Testing

Coming Soon

# Ordering & Support

- Pricing & Commissions
- Lead Times



tgs

Experience the Power of a Connected Lighting Community



Sign In 

[Forgot Password](#)

or

[Request Agency Portal Access](#)



**tgs**  
**2025 PRICE FILE VERSION 1.0 RELEASE NOTES**

- Price File Organization: The price file is organized into four categories: Architectural, Indoor, Outdoor, and Multi-Family.
- Freight Allowance Policy: A free freight allowance policy is in place for orders over \$4,500 (Continental USA only).
- Change Policy: Our average policy is 10% 10, with average charges only applicable to book price.
- Lead Times and Risk: Lead times vary and can be adjusted by contacting [sales@tgs.com](mailto:sales@tgs.com) for Dark Sky and Emergency Site items, please refer to the TDS portal located at <https://www.tgs.com/portal> for availability.
- Formal Quotes: Formal quotes are available upon request and can be obtained by emailing [quotes@tgs.com](mailto:quotes@tgs.com).
- Pricing is applicable beginning on 6/2/2025. This price guide replaces and supersedes all previous price file versions. Price and availability are subject to change.

"Thank you for your continued support and dedication to our mission. Your contributions have been invaluable for our success. As we move forward into the rest of this year, I am confident that with your partnership, we will achieve great things together!"  
 - Mike Salter, Director & CEO

**tgs** **TABLE OF CONTENTS**

DESCRIPTION	PAGES	DESCRIPTION	PAGES
Outdoor Architectural Round	7-8	Outdoor 10' Square Round	82
Outdoor Architectural Square	10-11	Outdoor 10' Round High Bay	83
Outdoor Architectural Square	13-15	Outdoor 10' Round Select High Bay	84
Outdoor Architectural Round	16-20	Outdoor 10' Round High Bay	85-88
Outdoor Architectural Square	21-24	Outdoor 10' Round High Bay	89-92
Outdoor Round Pendant	25-28	Outdoor 10' High Bay	93-96
Outdoor Round Pendant	29-32	Outdoor 10' Low High Bay Linear & CCT Selectable	97
Outdoor Linear Pendant	33-34	Outdoor 10' Low High Bay	98-104
Outdoor*	35-36	Outdoor 10' Industrial Low Bay	105-106



# Wrap Up

- Single Product Sample Kits Now Available
- Trade Show & Sales Visit Kit *(As Required)*

**Request A Quote**

[quotes@trulygreensolutions.com](mailto:quotes@trulygreensolutions.com)



# Thank You!

## Questions?

---

### What To Expect Next

Webinar Recording

Presentation PDF

### Reminder!

NFL Pick 'Em Challenge  
for Charity!