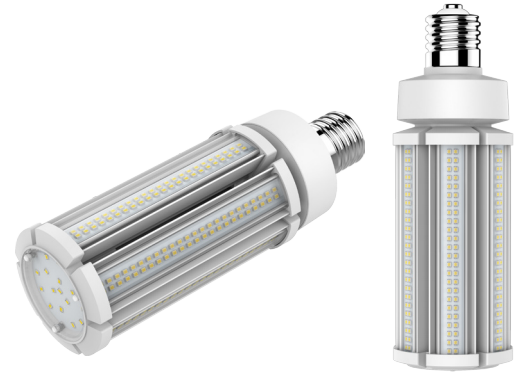




UNIVERSAL LIGHT™ G5 HID Replacement



DESCRIPTION

The Universal Light™ G5 has a highest lumen per watt in the industry. The Universal Light™ G5 delivers maximum efficiency with energy savings over 80%. The G5 lamp operates on line voltage, eliminating ballast replacement and lamp degradation. The TGS Universal Light™ G5 is a direct replacement for metal halide, high pressure sodium, and fluorescent lamps in fixtures with a mogul and medium base. It is an ideal replacement for acorn, tear drop, globe, bollards, post top, street light and area lighting and much more.

APPLICATIONS

Commercial, Industrial, Street Lights, Post Tops

FEATURES



Not all products are qualified on the DLC® QPL. To view our DLC® qualified products, please consult the DLC® Qualified Products List at www.designlights.org/qpl.



UNIVERSAL LIGHT™ G5

- 12W (1,800 lm)
- 18W (2,700 lm)
- 27W (4,050 lm)
- 36W (5,400 lm)
- 45W (6,750 lm)
- 54W (8,100 lm)
- 63W (9,450 lm)

Projected L70: 75,000+ hours
Warranty: 6 Years
Efficacy: 150 LpW

Construction

Aluminum alloy and a PC base housing.
Passive cooling system.

Electrical

Input Voltage: 100-277VAC
Optional external high power surge protector.

Optical System

360° beam pattern (Standard).
300° beam pattern (Optional).

Installation/ Mounting

Mogul Base (E39) Socket (Ballast must be bypassed)
Medium Base (E26) Socket (Ballast must be bypassed)

Warranty

6 Year Warranty.
Optional 7/10 Year Warranty Available.
See warranty documentation for more information.



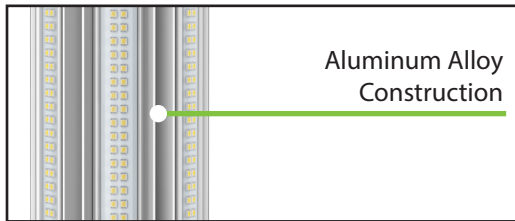
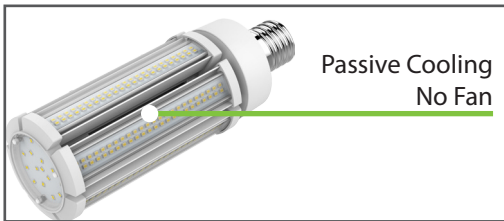
IP64



Passive Cooling



Suitable for Enclosed Space



Ordering Information

EXAMPLE: 318018-26-G5-E39-BAA

Universal Light™	Lens Cover	Wattage	CCT	Series Type	Base Type	Beam Angle	BAA
318	0 - Clear	12 - 12W 18 - 18W 27 - 27W 36 - 36W 45 - 45W 54 - 54W 63 - 63W	50 - 5000K 40 - 4000K 30 - 3000K 26 - City Spec™ 22 - HPS Match™ 19 - Wildlife Friendly	G5	E26 - Medium Base E39 - Mogul Base	(Blank) 360° Beam Angle (Standard) 300 - 300° Beam Angle (Optional)	BAA

Accessories

310-HSP-3WT (High Power Surge Protector)

Specifications and Dimensions subject to change without notice.

Optional accessories and distribution are purchased separately.

*MOQ and longer lead times may apply, please contact customer service for more information.

Performance Information

Input Voltage	100-277VAC
Input Frequency	50/60Hz
Wattage	See Performance Table
Delivered Lumens	See Performance Table
Efficacy	See Performance Table
CRI	>80
Available CCT	3000K, 4000K, 5000K
Proprietary CCT	Wildlife Friendly, HPS Match™, City Spec™
Projected L70	57,000+ hours
Power Factor	>0.9
THD	<20%
Dimming	None
Operating Temp.	-40°F~140°F
IP Rating	IP64

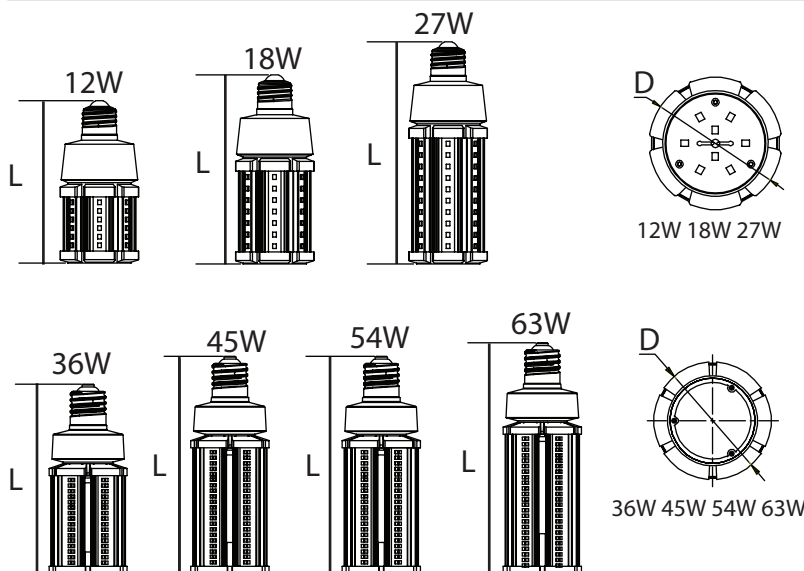
Replacement Chart

Wattage	Replacement (MH,HPS)
12W	50W
18W	75W
27W	150W
36W	175W
45W	200W
54W	250W
63W	320W

Performance Table

SKU	Wattage (W)	5000K	
		Delivered Lumens (lm)	Efficacy (lm/W)
318012-50-G5-E39-BAA	12	1800	150
318018-50-G5-E39-BAA	18	2700	150
318027-50-G5-E39-BAA	27	4050	150
318036-50-G5-E39-BAA	36	5400	150
318045-50-G5-E39-BAA	45	6750	150
318054-50-G5-E39-BAA	54	8100	150
318063-50-G5-E39-BAA	63	9450	150

Product Dimensions



SKU	D	E26	E39	Weight (lbs)
		L	L	
318012-XX-G5-XXX-BAA	ø2.36"	4.92"	5.59"	0.46
318018-XX-G5-XXX-BAA	ø2.36"	5.71"	6.38"	0.55
318027-XX-G5-XXX-BAA	ø2.36"	6.69"	7.36"	0.66
318036-XX-G5-XXX-BAA	ø3.35"	7.95"	8.62"	1.41
318045-XX-G5-XXX-BAA	ø3.35"	9.13"	9.80"	1.61
318054-XX-G5-XXX-BAA	ø3.35"	9.13"	9.80"	1.65
318063-XX-G5-XXX-BAA	ø3.35"	9.72"	10.39"	1.81

Accessories



[310-HSP-3WT]

HID Surge Protector

The LED HID surge protector offers an excellent long-term solution to protect your outdoor commercial and industrial lighting. This device guards against lightning strikes and power surges, as well as temperature fluctuations, moisture, and vibration. With surge protection for small surges up to 5kA/10kV, it can withstand a single charge of up to 10 kA/20kV. The durable LED HID surge protector will provide maximum protection for your lighting system against rain, snowstorms, thunderstorms, lightning, and seasonal temperature changes.

Key Features

- Nominal operating voltage: 110-277V AC
- Maximum discharge current voltage: 390V AC
- Nominal discharge current: 5kA
- Protection level: 1.1kV
- Nominal discharge voltage: 10kV
- Maximum discharge voltage: 20kV
- Frequency: 50-60Hz
- Response time: 25ns
- Outer casing protection grade: IP67
- Operating temperature range: -40°C ~ 80°C

