

ECONOMICAL

CHB-E™



- Available in Black and White Finish
- 3/4" Conduit Pendant Mount Optional



SYSTEM OUTPUT:
100W (13,000 lm)
150W (19,500 lm)
200W (26,000 lm)

PERFORMANCE

CHB-P™



- Built-in surge protection
- Best-in-class performance
- Many accessories available



SYSTEM OUTPUT:
150W (20,250 lm)
200W (27,000 lm)
240W (32,000 lm)
300W (40,500 lm)

HIGH-OUTPUT

CHB-P HP™



- High lumen output
- Isolated driver
- Motion Sensor option
- Variety of accessories available



SYSTEM OUTPUT:
400W (54,000 lm)
500W (67,500 lm)

VISUAL COMFORT

CHB-SE™



- Slim design
- Emergency Battery backup option
- Standard black finish
- Integrated motion sensor option



SYSTEM OUTPUT:
67W (9,100 lm)
97W (12,800 lm)
140W (18,500 lm)
190W (25,000 lm)

VISUAL COMFORT

CHB-S™



- Slim profile
- No breakable components
- Standard white finish
- Integrated motion sensor option



SYSTEM OUTPUT:
100W (14,500 lm)
180W (26,100 lm)

FOOD PROCESSING

CHB-N™



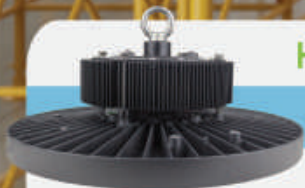
- NSF rated
- Full wash down
- IP69K Enclosure Rating
- Integrated motion sensor option



SYSTEM OUTPUT:
100W (13,000 lm)
150W (19,500 lm)
200W (26,000 lm)

HEAT-TOLERANT

CHB-HT65™



- High operation temps. up to 149°F
- Auto recovery
- Frosted PC diffuser



SYSTEM OUTPUT:
100W (13,000 lm)
150W (19,500 lm)

EXTREME TEMP RATED

CHB-XT80™



- High operation temps. up to 176°F
- Extreme conditions solution



SYSTEM OUTPUT:
150W (22,500 lm)

ECONOMICAL

LHB-EG2™



- Damp Location Listed
- Emergency Battery backup option
- Integrated motion sensor option



SYSTEM OUTPUT:
90W (12,150 lm)
130W (17,550 lm)
180W (24,300 lm)
205W (27,675 lm)
200W (36,450 lm)
300W (40,500 lm)